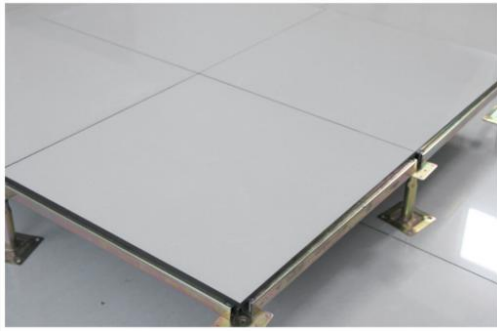
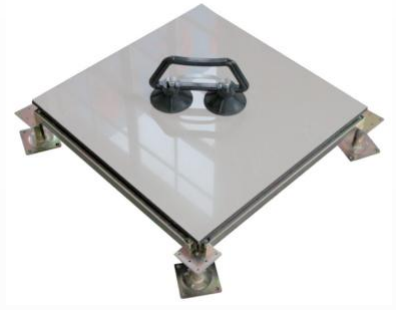


Ceramic Raise Access Floor

Change the traditional ceramic tile laid method, ceramic tile all-steel floor owns higher quality in fire retardancy and abrasion resistance. Floor can also be used with calcium sulphate, aluminum honeycomb panel because of strong flexibility.



Ordinary ceramic tile surface no antistatic all-steel floor performance, if you want to have antistatic function, the cover need to use special high quality antistatic ceramic tile.

Antistatic Ceramic Raised Access Floor

Anti-static ceramic tile is in the process of production with high temperature resistant conductive inorganic material penetration, physical modification, and high temperature manufacturing. It has strong and permanent antistatic performance.

Introduction of Products

All steel shell structure, high quality GB#425 cement in filled. GB anti-static ceramic cover, Low plane is deep stretched panel, surface panel is hard steel with "L" type edge trim. The pedestal is formed by molding, riveted structure, screw rod adjust the height at precision; Stringer is made with galvanized standard tube, good flatness.

Technical Specification

Size	Fire Performance	Concentrated load	Impact load N	Ultimate load N	Uniform load N/m ²	Rolling load	
						10 times	10000 times
600*600*40 600*600*45	≥440	≥1960	≥200	≥295	≥5880	≥1958	≥1566
	≥662	≥2950	≥301	≥445	≥8850	≥2948	≥2356
	≥800	≥3550	≥363	≥538	≥11250	≥3560	≥2670
	≥1000	≥4450	≥453	≥670	≥13350	≥4450	≥3560
	≥1250	≥5560	≥567	≥670	≥16680	≥5560	≥4450