



ABOUT US

5 Was established in 2006 as a leading manufacture of network cabling solution to building service industry.

Our aim is supply high quality network cabling containment products and solution by by topwell techonogy leading manufacture which suit your needs.
Ensuring you get what you want, where you want it.

2006–2007

First Manufacture Launched.

2010–2011

Aid-seeking strategies include selecting suitable overseas companies as strategic partners, OEM,as well as using favorable financial proposal and national foreign-aid policy in large projects.

2014–2015

Brand-new workshop covers an area of 10000Sqm.40 more machine was installed.

2018–2019

The fourth brand-new workshop,covers an area of 70000Sqm,a team of 400 people,leading supplier,manufacturing excellence in China.

2008–2009

Providing DEM/ODM Service for Global Famous Brands.

2012–2013

Establish Our New Brand TOPWELL TECH,Get ISO9001 Quality Approval.

2016–2017

The third brand-new workshop covers an area of 30000Sqm,100 more machines were installed, 60% of the automation equipment.one stop OEM.





OUR CUSTOMERS COME FIRST

Listening first, flexibility and transparency
are just a few of the ways we put our
customers first.



EXTENSIVE ENGINEERING KNOWLEDGE

We lead with engineering meaning no surprises in lead
time or cost when entering production.



A CHINESE SUPPLIER GLOBALLY

China is called "world factory" we make it our
priority to be what you need us.



UNMATCHED INDUSTRY EXPERTISE

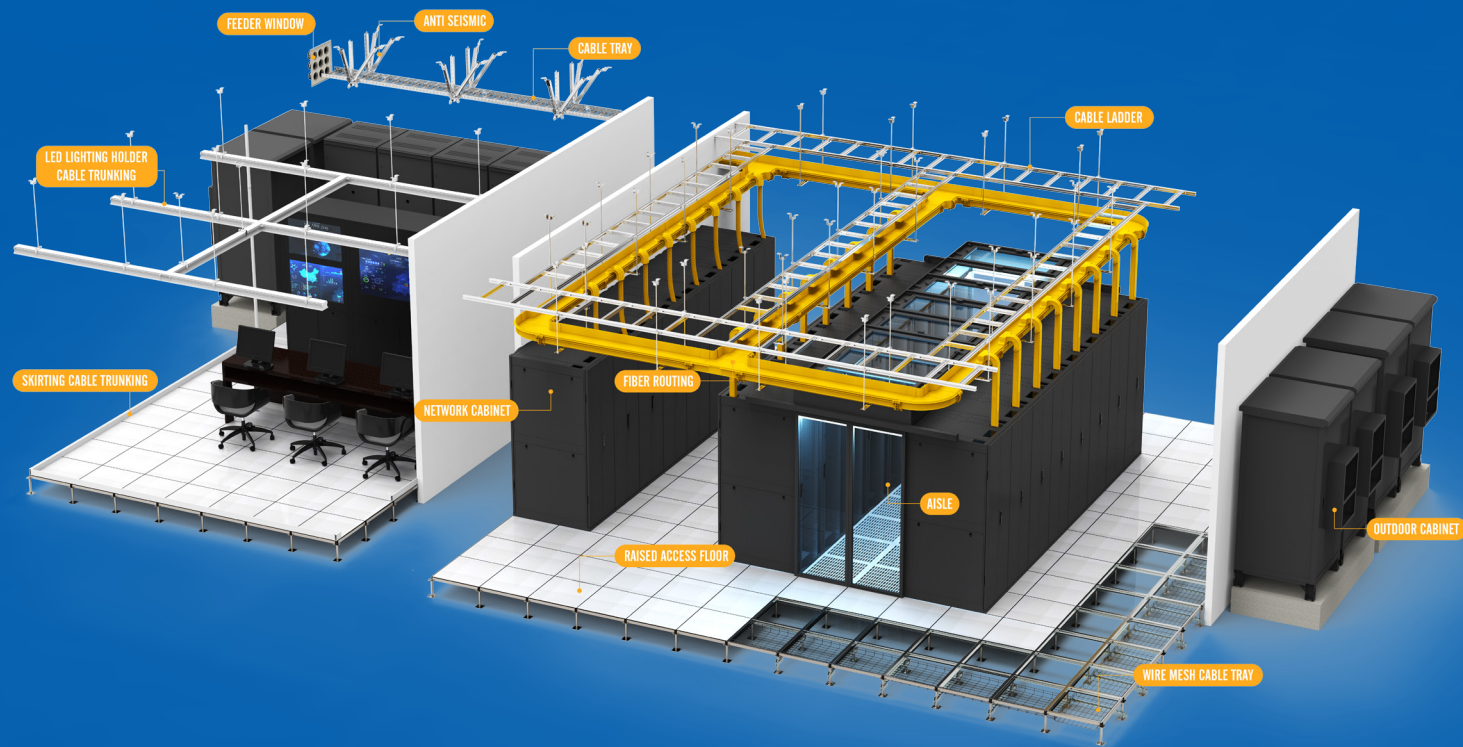
For our customer's first program their 50th, we
participate in specific industries because we
understand the mission critical specs, best practices
and customers' expectations.

Your Chinese Supplier, Globally

China is a "world factory" you are looking for a supplier who does it all, which is deeply relevant to our customers' needs, affecting on-time delivery, supply chain strength, price and customer service. We make it our mission to be where our customers need us most.

We create total solutions for our customers that consider not only the specific product, but also the overall cost, market trends and supply chain availability and metrics. In a time where many of these items such as network cabling containment are in flux, this means providing them a partner who can interpret and react to market changes, establish a successful international presence near their regional operation centers, exercise supply chain flexibility and understand the continual need to adapt to our customers' ever-evolving needs. Your partner is Topwell Technology.





Quality & Certifications

Topwell technology uses an external review, education, assessment, and audit Certification Process to confirm that our processes are designed to produce products that consistently meet specific requirements. Written assurance is provided by means of a certificate issued as formal recognition by an independent accreditation body that we are operating according to international standards.



Topwell technology Industries holds certifications with: ISO 9001:2015

The ISO 9000 family of standards addresses various aspects of quality management. The standards provide guidance for companies and organizations to ensure that products and services consistently meet customer's requirements and that quality is consistently improved.

UL is a global leader in testing, inspection, certification, auditing and validation. The UL Mark is the single most accepted Certification Mark in the United States, appearing on 22 billion products annually.



ADVANTAGES OF OEM:

1. We make the manufacturing of all styles of products possible. Fiber Runner Way, Wire Mesh Cable tray, Network Anti-static Raised Access Floor etc, we have the equipment for every product.

2. We have achieved low cost, high-speed manufacturing with the fully-integrated manufacturing lines in our own plants. Since we process, formulate, fill and pack all ingredients in one place, we can keep costs low and speed up our manufacturing process.

3. With the R&D conducted in our Research Center, we can offer innovative product proposals. Our fully-operational research facility is a rarity for an OEM. Our expert staff research and develop a variety of raw materials.

4. We provide full sales support including packaging and promotional tools. Total support means that we put our track record in dietary supplement development and sales to work to make thorough and effective proposals and provide sales support.

5. We can handle both high-mix low-volume production and mass production. With all of our manufacturing equipment in our own plants, we can be flexible.

6. Our quality assurance system is directly built into our manufacturing plants. We assign staff from our Quality Assurance Department to each plant to implement traceability and stringent quality control on every line.



INDEX



01

COLD & HOT AISLE
CONTAINMENT SYSTEM

01-52

02

CABINET & RACK

53-134

03

PDU

135-146

04

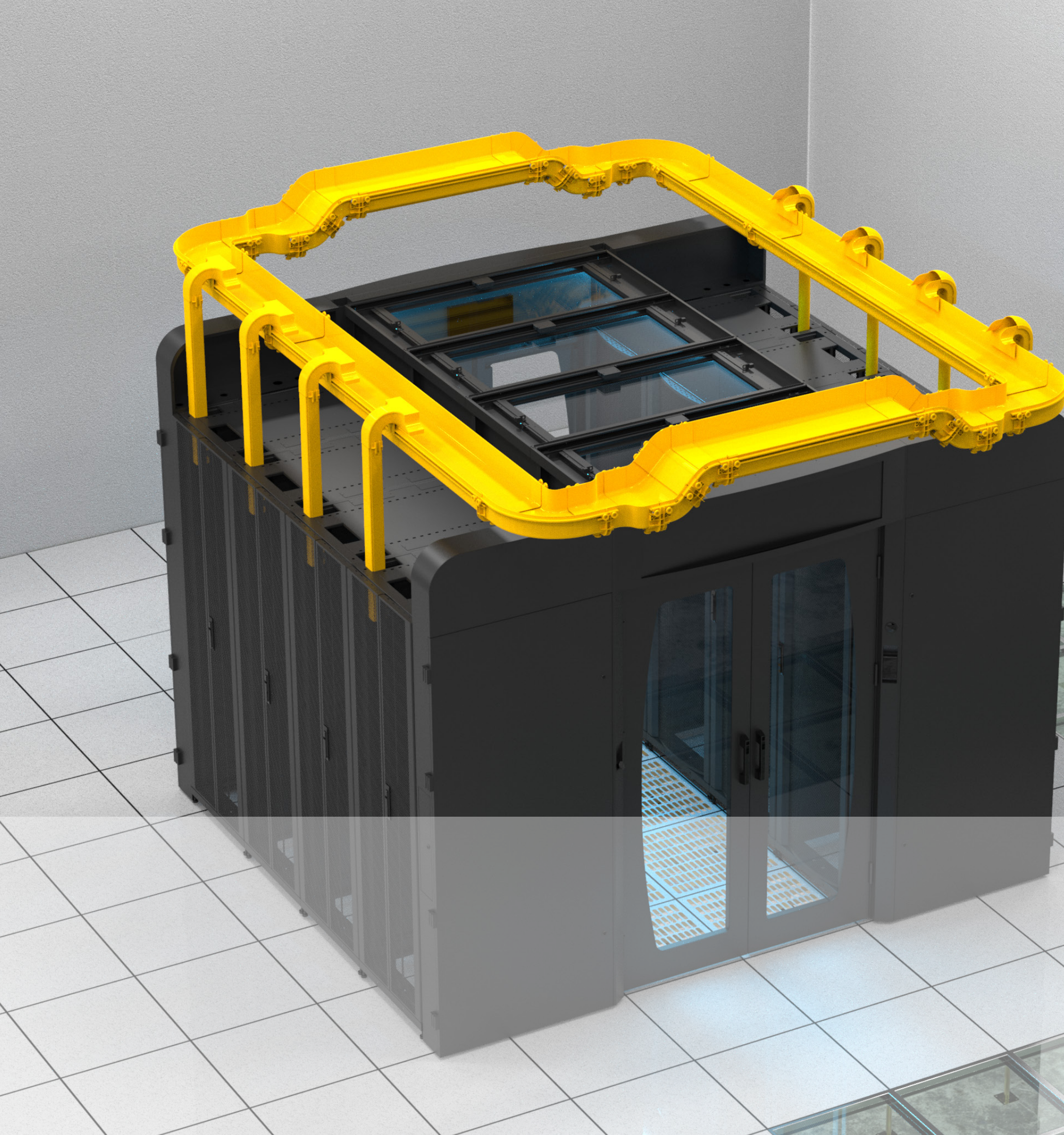
ANTI-STATIC RAISED FLOOR

147-212



COLD & HOT AISLE CONTAINMENT SYSTEM

+



60%
AIRFLOW
PERFORMANCE

60%
HEAT DISSIPATION
EFFICIENCY

40%
ELECTRICITY ENERGY
CONSUMPTION

The aisle containment system is a modular rowbased thermal containment solution, which separates cold and hot data center air streams to and from equipment. It manages airflow at the source, increases the cooling efficiency and significantly lowers down operating costs.

Row level thermal containment improves cooling efficiency and predictability to address zones and complete data center deployments. Most parts of the aisle containment components are designed by modular, which allows quick deployment on site and address changing needs or future expansion with pay-as-you grow architecture.

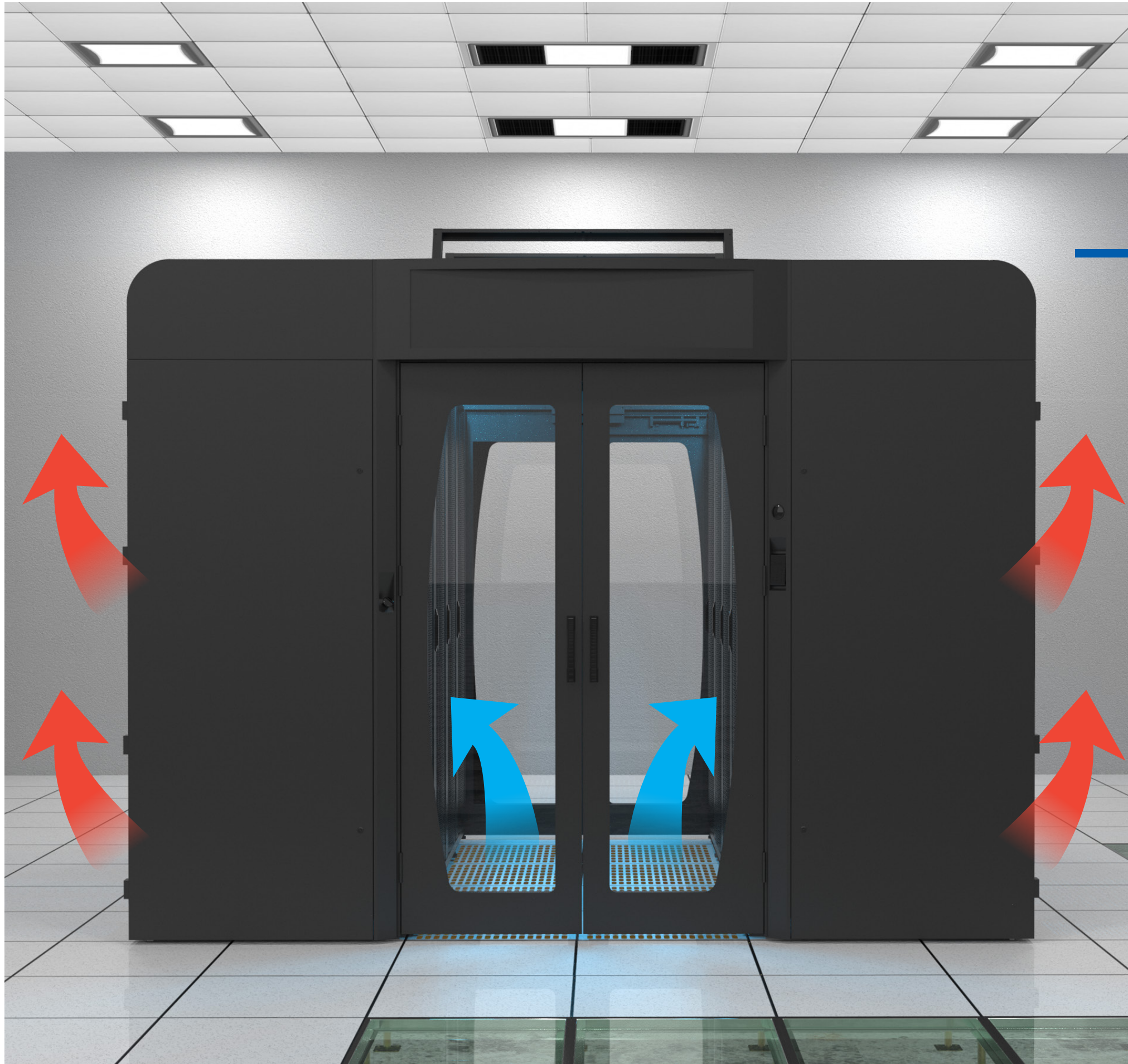
Provide the right combination of safety and security, dual mechanical doors or sliding doors are available.

Aisle containment in the data center requires that cabinets are aligned in a hot aisle/cold aisle layout. Containment panels or strips create a partition to isolate either the server supply air (cold aisle containment) or the exhaust air (hot aisle containment). Preventing the supply and exhaust air from mixing significantly increases the capacity and cooling efficiency of the cooling infrastructure.

Each site will be different due to the site conditions, cooling infrastructure, rack density and other factors. If properly installed you can expect 20-50% reduction in cooling costs. Efficiency is maximized if the cooling systems with variable speed fans and there is a good return air path

COLD AISLE CONTAINMENT

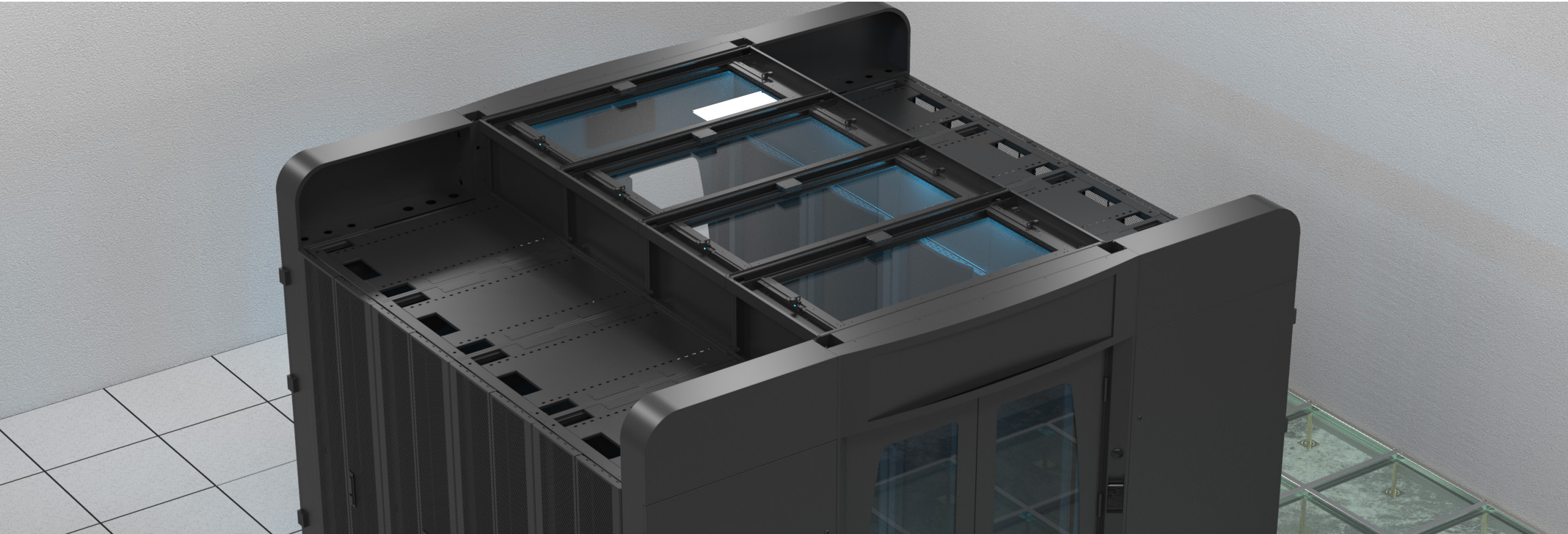




APPEARANCE AND STRUCTURE

- 1 Containment Top Panel Has Even Roof Structure, 350mm Higher Than Cabinet Top, Top Panel Total Width Is 1305mm, Modular Frame Design, Easy To Installation.
- 2 The Net Height Of Aisle Container Is Above 2 Meters When The Top Panel Dropped Away, So The Daily Maintenance Will Not Be Affected.
- 3 Thanks To The Modular Designed Cold Aisle Containment Units, Every Unit Can Be Installed Independently And Easily Connected With The Units In Next.
- 4 Doors Should Be Installed At The Front And Rear To Prevents The Hot Airflow Enter Into The Equipment.
- 5 Pre-Installed Terminal Block Is Connected With Fire Suppression Systems, The Active Containment Roof panel Will Open When There Is A Fire Alarm Signal.

COMPONENTS OF CONTAINMENT ROOF PANEL



Under Normal Operation Time, The Roof panels Are Stuck By Electromagnet In A Horizontal Position, In Case There Is A Fire Alarm, Roof panel's Electro-Magnet Will Be Cut Off, Panel Will Open Due To It's Gravity To Make Sure The Extinguish Gas Can Enter Into The Cold Aisle Containment.

ELECTRO-MAGNET COMPONENT PARAMETER

Working Voltage	Rated Power	Sticking Force
24V DC	2.4W	F ≥ 60KG@D=0mm,12V DC



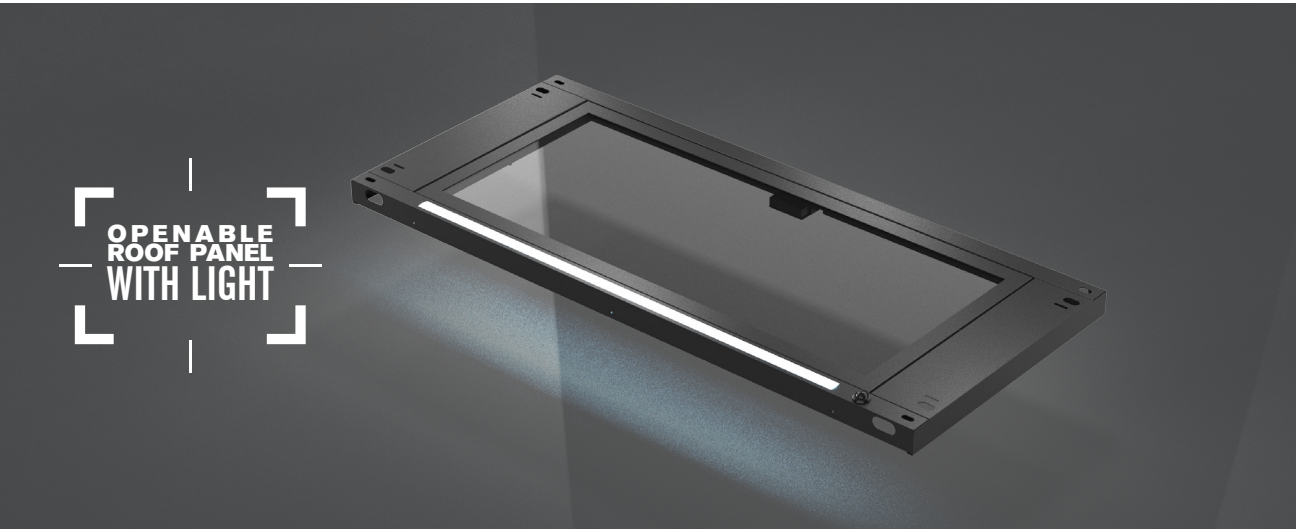
ROOF PANEL OPENED

1/ The Roof panels Are Made From Steel Frame And Tempered Glass, The Thickness Of Steel Frame Is More Than 1.5mm, Thickness Of Glass Is More Than 5mm, Light Pass Rate Is More Than 99%.

2/ All the panels has width of 600mm, each unit can be installed independently and connected to the next one.

3/ All The Panels Are Stuck By Electro-Magnet, Panels Will Be Opened When There Is A Fire Alarm, Sensor Action Time Is Less Than 3 Seconds, The Panels Occupies At Least 60% Volume Against The Whole Cold Aisle Containment.

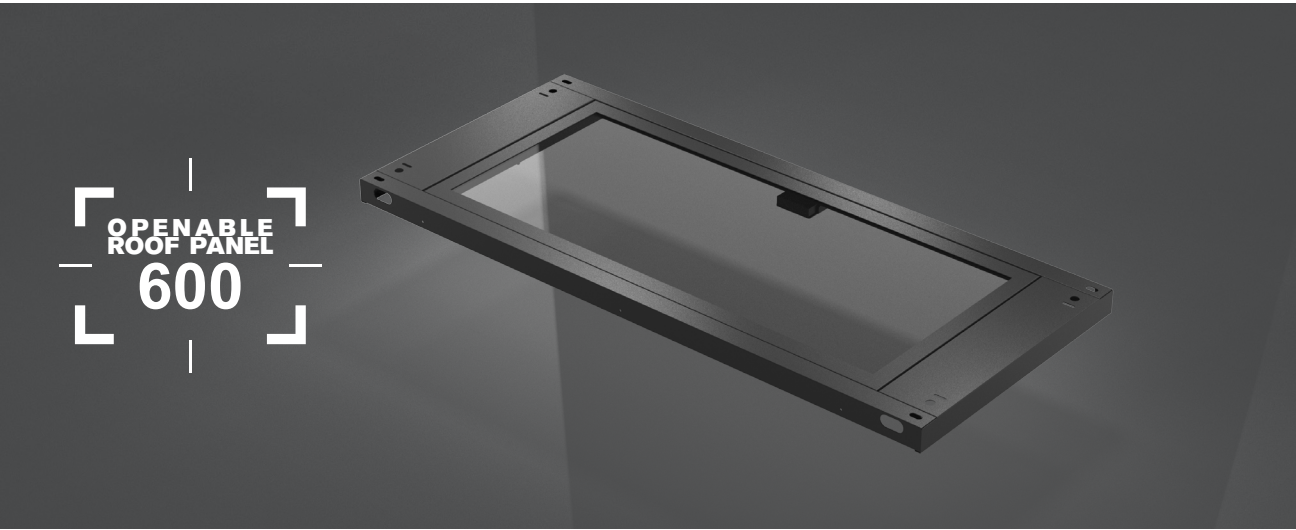
COMPONENTS OF CONTAINMENT ROOF PANEL



OPENABLE ROOF PANEL

Openable Roof Panel Was Attracted By Electromagnet Under Working Condition, The Panel Is Paralleled To The Walkway For Sealing Purpose. When A Fire Alarm Occurs, The Panel Will Be Opened Shortly To Ensure That The Extinguishing Gas Can Enter The Closed Cold Aisle Containment Before The Fire Fighting System Is Activated.

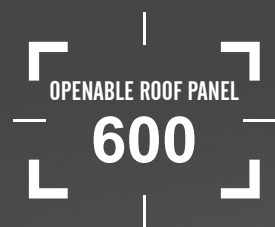
NO	ITEM NO	NAME	SIZE	DESCRIPTION
1	KTD 01 1 001	Openable Glass Roof Panel 600mm	600(D)*1375(W)	Depth: 600mm; Width: 1375mm; Metal Frame And Tempered Glass, 70% Area Is Openable, Light Transmission Rate Is 80% In The Openable Area
2	KTD 01 1 002	Openable Glass Roof Panel 800mm	800(D)*1375(W)	Depth: 800mm; Width: 1375mm; Metal Frame And Tempered Glass, 60% Area Is Openable, Light Transmission Rate Is 80% In The Openable Area
3	KTD 01 1 003	Openable Glass Roof Panel 600mm, With Light	600(D)*1375(W)	Depth: 600mm; Width: 1375mm; Metal Frame And Tempered Glass, With Built In Led Light, 70% Area Is Openable, Light Transmission Rate Is 80% In The Openable Area
4	KTD 01 1 004	Openable Glass Roof Panel 800mm, With Light	800(D)*1375(W)	Depth: 800mm; Width: 1375mm; Metal Frame And Tempered Glass, With Built In Led Light, 60% Area Is Openable, Light Transmission Rate Is 80% In The Openable Area
5	KTD 01 1 005	Openable Pc Roof Panel 600mm	600(D)*1375(W)	Depth: 600mm; Width: 1375mm; Metal Frame And Tempered Glass, 70% Area Is Openable, Light Transmission Rate Is 80% In The Openable Area
6	KTD 01 1 006	Openable Pc Roof Panel 800mm	800(D)*1375(W)	Depth: 600mm; Width: 1375mm; Metal Frame And Tempered Glass, 60% Area Is Openable, Light Transmission Rate Is 80% In The Openable Area
7	KTD 01 1 007	Openable Pc Roof Panel 600mm, With Light	600(D)*1375(W)	Depth: 600mm; Width: 1375mm; Metal Frame And Tempered Glass, With Built In Led Light 70% Area Is Openable, Light Transmission Rate Is 80% In The Openable Area
8	KTD 01 1 008	Openable Pc Roof Panel 800mm, With Light	800(D)*1375(W)	Depth: 800mm; Width: 1375mm; Metal Frame And Tempered Glass, With Built In Led Light 70% Area Is Openable, Light Transmission Rate Is 80% In The Openable Area



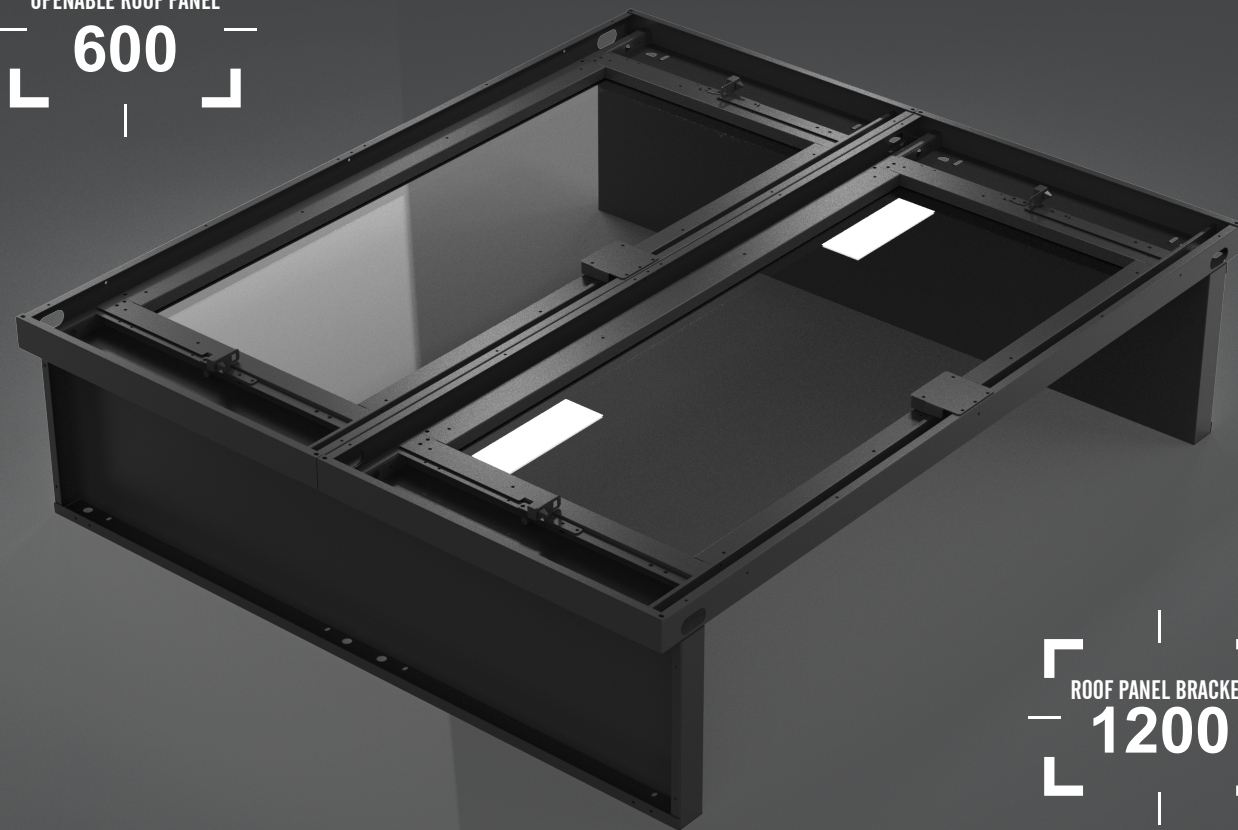
FIXED ROOF PANEL

Fixed Roof Panel Is Made Of Steel Frame Plus Transparent Window Inside, Unable To Open, Others Same As Openable Panel For System Integrity Purpose.

NO	ITEM NO	NAME	SIZE	DESCRIPTION
1	KTD 01 2 001	Fixed Glass Roof Panel 600mm	600(D)*1375(W)	Depth: 600mm; Width: 1375mm; Fixed At Top, Metal Frame And Tempered Safe Glass
2	KTD 01 2 002	Fixed Glass Roof Panel 800mm	800(D)*1375(W)	Depth: 800mm; Width: 1375mm; Fixed At Top, Metal Frame And Tempered Safe Glass
3	KTD 01 2 003	Fixed Pc Roof Panel 600mm	600(D)*1375(W)	Depth: 600mm; Width: 1375mm; Fixed At Top, Metal Frame And Transparent Pc Board
4	KTD 01 2 004	Fixed Pc Roof Panel 800mm	800(D)*1375(W)	Depth: 800mm; Width: 1375mm; Fixed At Top, Metal Frame And Transparent Pc Board
5	KTD 01 2 005	Fixed Glass Roof Panel 600mm With Light	600(D)*1375(W)	Depth: 600mm; Width: 1375mm; Fixed At Top, Metal Frame And Tempered Safe Glass, With Built In Led Light
6	KTD 01 2 006	Fixed Glass Roof Panel 800mm With Light	800(D)*1375(W)	Depth: 800mm; Width: 1375mm; Fixed At Top, Metal Frame And Tempered Safe Glass, With Built In Led Light
7	KTD 01 2 007	Fixed Pc Roof Panel 600mm With Light	600(D)*1375(W)	Depth: 600mm; Width: 1375mm; Fixed At Top, Metal Frame And Transparent Pc Board, With Built In Led Light
8	KTD 01 2 008	Fixed Pc Roof Panel 800mm With Light	800(D)*1375(W)	Depth: 800mm; Width: 1375mm; Fixed At Top, Metal Frame And Transparent Pc Board, With Built In Led Light
9	KTD 01 2 009	Fixed Metal Roof Panel 300mm	300(D)*1375(W)	Depth: 300mm; Width: 1375mm; All Metal Structure Fixed At Top
10	KTD 01 2 010	Fixed Glass Roof Panel 300mm	300(D)*1375(W)	Depth: 300mm; Width: 1375mm; Top Fixed, Metal Frame And Tempered Safe Glass
11	KTD 01 2 011	Fixed Pc Roof Panel 300mm	300(D)*1375(W)	Depth: 300mm; Width: 1375mm; Fixed At Top, Metal Frame And Transparent Pc Board



OPENABLE ROOF PANEL
600



ROOF PANEL BRACKET
1200

COMPONENTS OF CONTAINMENT ROOF PANEL



ROOF PANEL BRACKET

Roof panel bracket is installed at the top of cabinet for support purpose. The normal height is 300mm to make sure cabinet door has no conflict while the roof panel is opened. The usage of roof panel bracket and panel is for sealing purpose to isolate the hot and cold air flow.

NO	ITEM NO	NAME	SIZE	DESCRIPTION
1	KTD2 3 03 1 0	Roof Panel Bracket 300mm	300(D)*300(H)	Height: 300mm; width: 300mm; thickness: 1.2Mm; for 300mm wide cabinets; 1 pair for a 300mm wide roof panel
2	KTD2 3 06 1 0	Roof Panel Bracket 600mm	600(D)*300(H)	Height: 300mm; width: 600mm; thickness: 1.2Mm; for 600mm wide cabinets; 1 pair for a 600mm wide roof panel
3	KTD2 3 08 1 0	Roof Panel Bracket 800mm	800(D)*300(H)	Height: 300mm; width: 800mm; thickness: 1.2Mm; for 800mm wide cabinets; 1 pair for a 800mm wide roof panel
4	KTD2 3 12 1 0	Roof Panel Bracket 1200mm	1200(D)*300(H)	Height: 300mm; width: 1200mm; thickness: 1.2Mm; for 1200mm wide cabinets; 1 pair for a 1200mm wide roof panel
5	KTD2 3 18 1 0	Roof Panel Bracket 1800mm	1800(D)*300(H)	Height: 300mm; width: 1800mm; thickness: 1.2Mm; for 1800mm wide cabinets; 1 pair for a 1800mm wide roof panel
6	KTD2 3 03 1 1	Roof Panel Bracket 300mm With Mounting Holes	300(D)*300(H)	Height: 300mm; width: 300mm; thickness: 1.2Mm; for 600mm wide cabinets; 1 pair for a 600mm wide roof panel; with holes for t5 lighting and atmosphere lamp.
7	KTD2 3 06 1 1	Roof Panel Bracket 600mm With Mounting Holes	600(D)*300(H)	Height: 300mm; width: 600mm; thickness: 1.2Mm; for 600mm wide cabinets; 1 pair for a 600mm wide roof panel; with holes for t5 lighting and atmosphere lamp.
8	KTD2 3 08 1 1	Roof Panel Bracket 800mm With Mounting Holes	800(D)*300(H)	Height: 300mm; width: 800mm; thickness: 1.2Mm; for 800mm wide cabinets; 1 pair for a 800mm wide roof panel; with holes for t5 lighting and atmosphere lamp.
9	KTD2 3 12 1 1	Roof Panel Bracket 1200mm With Mounting Holes	1200(D)*300(H)	Height: 300mm; width: 1200mm; thickness: 1.2Mm; for 2x600mm wide cabinets; 1 pair for 2x600mm wide roof panel; with holes for t5 lighting and atmosphere lamp.
10	KTD2 3 18 1 1	Roof Panel Bracket 1800mm With Mounting Holes	1800(D)*300(H)	Height: 300mm; width: 1800mm; thickness: 1.2Mm; for 3x600mm wide cabinets; 1 pair for 3x600mm wide roof panel; with holes for t5 lighting and atmosphere lamp.

FUNCTIONAL ROOF PANEL

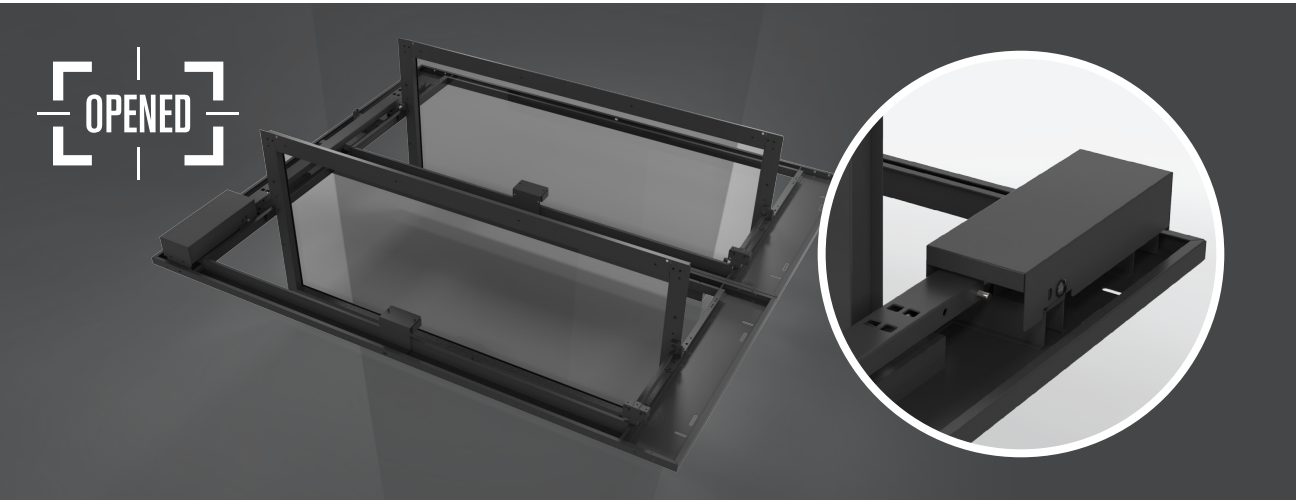
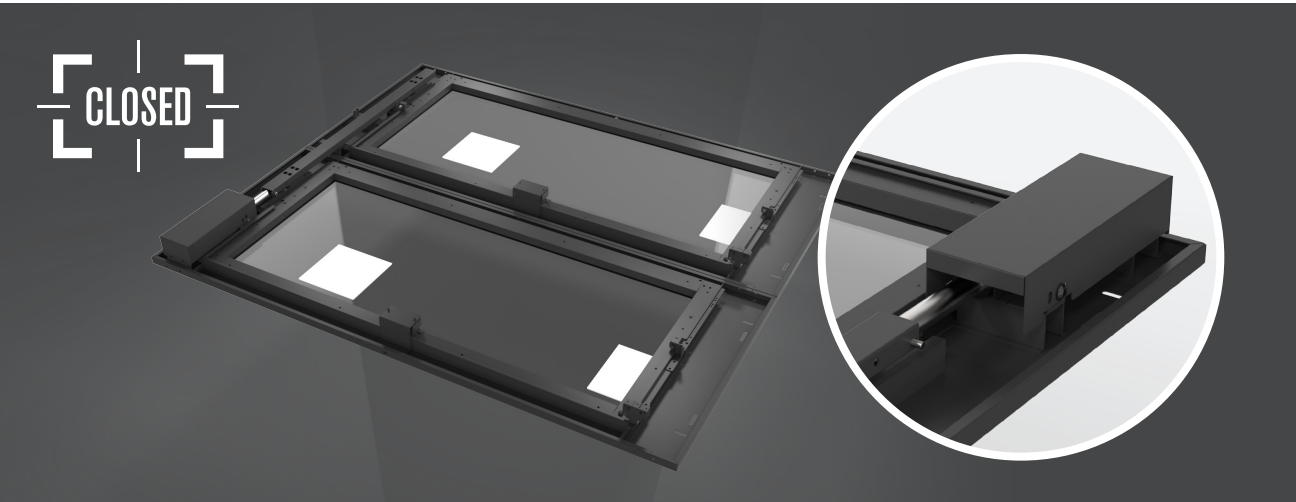
Functional Roof Panel Is Made Of Steel Sheet, Suit For Installation Of Environmental Control Module And The Control Device Of The Aisle Containment At The Beginning, End Or Middle Of The Roof Panel. Hole Specification Should Be Provided By Client In Advance.

NO	ITEM NO	NAME	SIZE	DESCRIPTION
1	KTD 01 3 001	Functional Roof Panel 600mm	600(D)*1375(W)	Metal Structure Fixed At Top, Customized Hole Positions Upon Request.
2	KTD 01 3 002	Functional Roof Panel 800mm	800(D)*1375(W)	Metal Structure Fixed At Top, Customized Hole Positions Upon Request.
3	KTD 01 3 003	Functional Roof Panel 600mm With Light	600(D)*1375(W)	Metal Structure Fixed At Top, Built In Led Light, Customized Hole Positions Upon Request.
4	KTD 01 3 004	Functional Roof Panel 800mm With Light	800(D)*1375(W)	Metal Structure Fixed At Top, Built In Led Light, Customized Hole Positions Upon Request.



FIRE FIGHTING
LINKAGE

COMPONENTS FOR
RESETTING THE ROOF PANEL



Perfectly designed one button open and close system, ensure all the roof panels can be opened and closed automatically, with no power consumption and no maintenance needed in daily use, motor voltage DC 12V.

ITEM NO	NAME	VOLTAGE	DESCRIPTION
KTD 07 2 001	Components for resetting the roof panel	DC12V	The system includes resetting push rod, connecting rod and status capturing to carry out the linkage of roof panel open and close.

FRAMEWORK DESIGN

- 1/

Modular designed frame made of cold roll steel, with thickness $\geq 1.2\text{mm}$ to ensure the firmness and security.
- 2/

Each modular unit has proper space for cable management of installation sensor, control unit etc.
- 3/

The framework meets the requirements for laying the air sampling pipe network of the fire protection system.

CONTAINMENT DOOR SPECIFICATION

- 1/

The door has the steel frame with built in 5mm thickness glass, seamlessly connected with cabinets to prevents airflow leakage.
- 2/

Both the front and rear of the containment has the doors, sliding on the rail with nylon silent pulley, to ensure the smooth open and close.





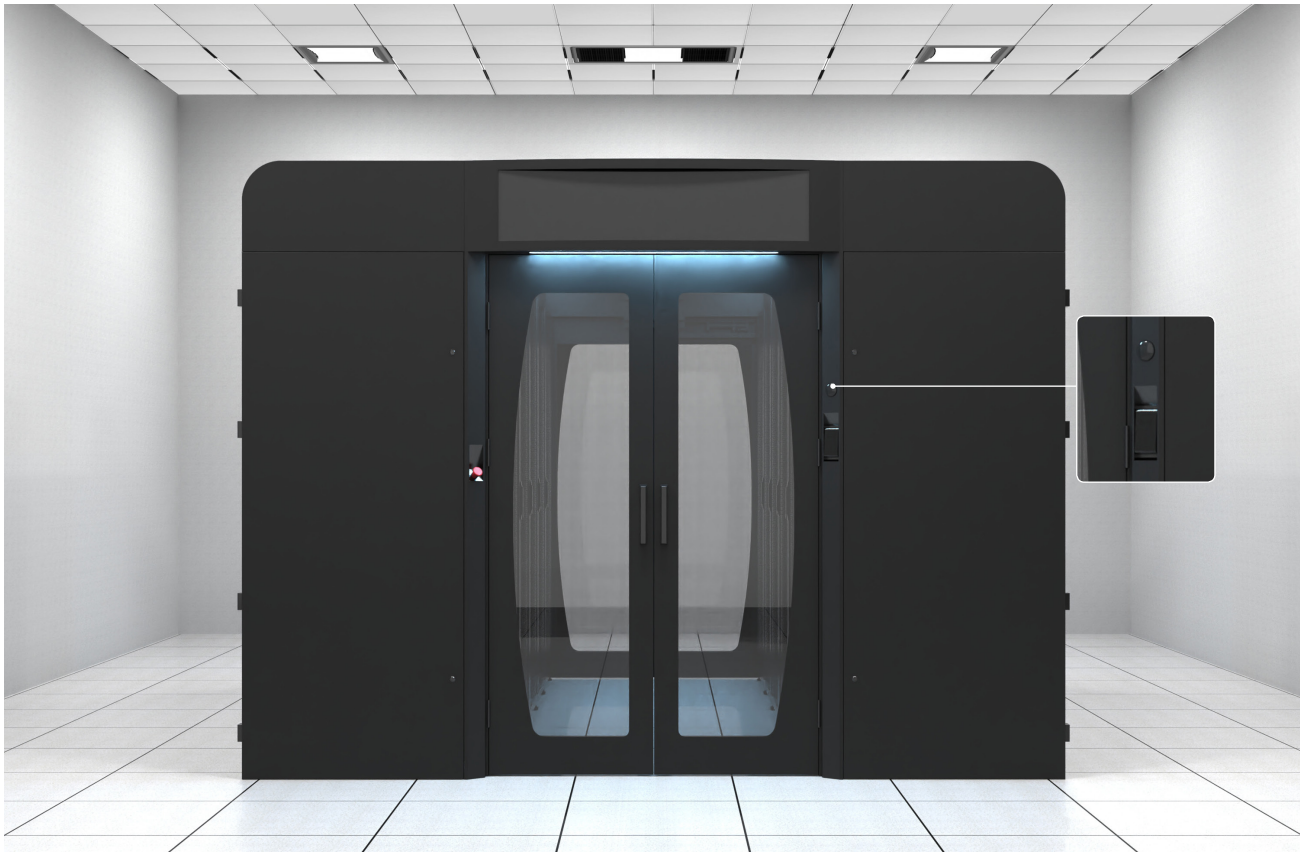
M.O.V.A.B.L.E DOOR



HINGED DOOR

Split outward doors with two knobs, with buffer automatic closing device, door open angle bigger than 110°. with 5mm thickness transperant monitoring window. Able to install lighting switches, roof panel emergency stop control device, access control card reader, etc.

NO	ITEM NO	NAME	SIZE	DESCRIPTION
1	KTD 03 1 001	Hinged door 1200mm*2000mm	1200(W)*2000(H)	Made Of Metal Frame And Transperant Window, With Function Of Open Angle And Automatic Closing
2	KTD 03 1 002	Hinged door 1200mm*2200mm	1200(W)*2200(H)	Made Of Metal Frame And Transperant Window, With Function Of Open Angle And Automatic Closing
3	KTD 03 1 003	Hinged door with access control 1200mm*2000mm	1200(W)*2000(H)	Made Of Metal Frame And Transperant Window, With Function Of Open Angle And Automatic Closing, With Access Control.
4	KTD 03 1 004	Hinged door with access control 1200mm*2200mm	1200(W)*2200(H)	Made Of Metal Frame And Transperant Window, With Function Of Open Angle And Automatic Closing, With Access Control.



HINGED DOOR WITH LED SCREEN AND CABINETS AT TWO SIDES

Split outward doors with two knobs, with buffer automatic closing device, door open angle bigger than 110°. with 5mm thickness transperant monitoring window. Able to install lighting switches, roof panel emergency stop control device, access control card reader, etc.

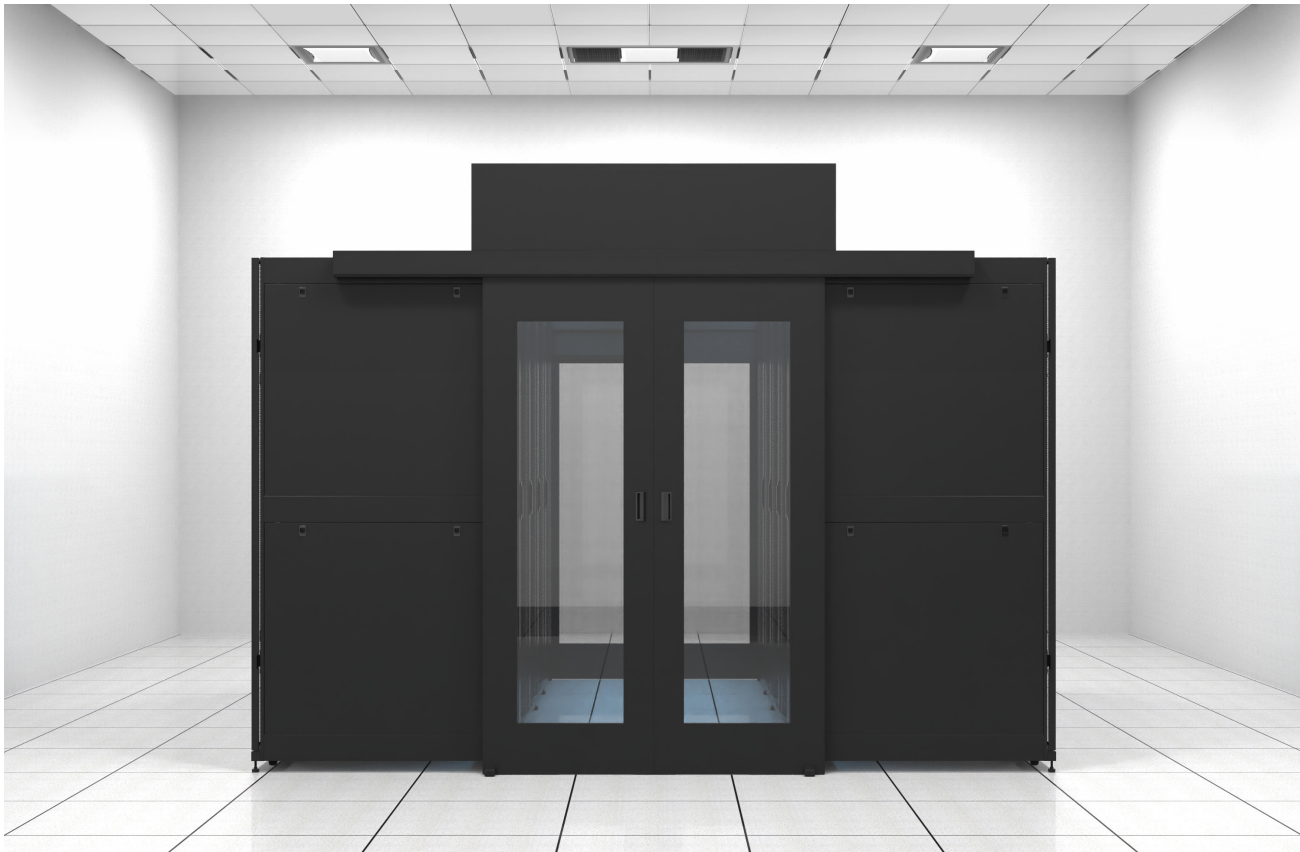
NO	ITEM NO	NAME	SIZE	DESCRIPTION
1	KTD 03 1 007	Hinged door with LED screen and cabinets at two sides. 1200mm*2000mm	1200(W)*2000(H)	Made of metal frame and transperant window, with function of open angle and automatic closing, with access control, with decorate frame at two sides and LED screen at top.
2	KTD 03 1 008	Hinged door with LED screen and cabinets at two sides. 1200mm*2200mm	1200(W)*2200(H)	Made of metal frame and transperant window, with function of open angle and automatic closing, with access control, with decorate frame at two sides and LED screen at top.



ALUMINUM ALLOY FRAME SLIDING DOOR

With a sliding hanging rail at the top, no rail at the bottom, knob on both sides.
with 5mm thickness transperant monitoring window.

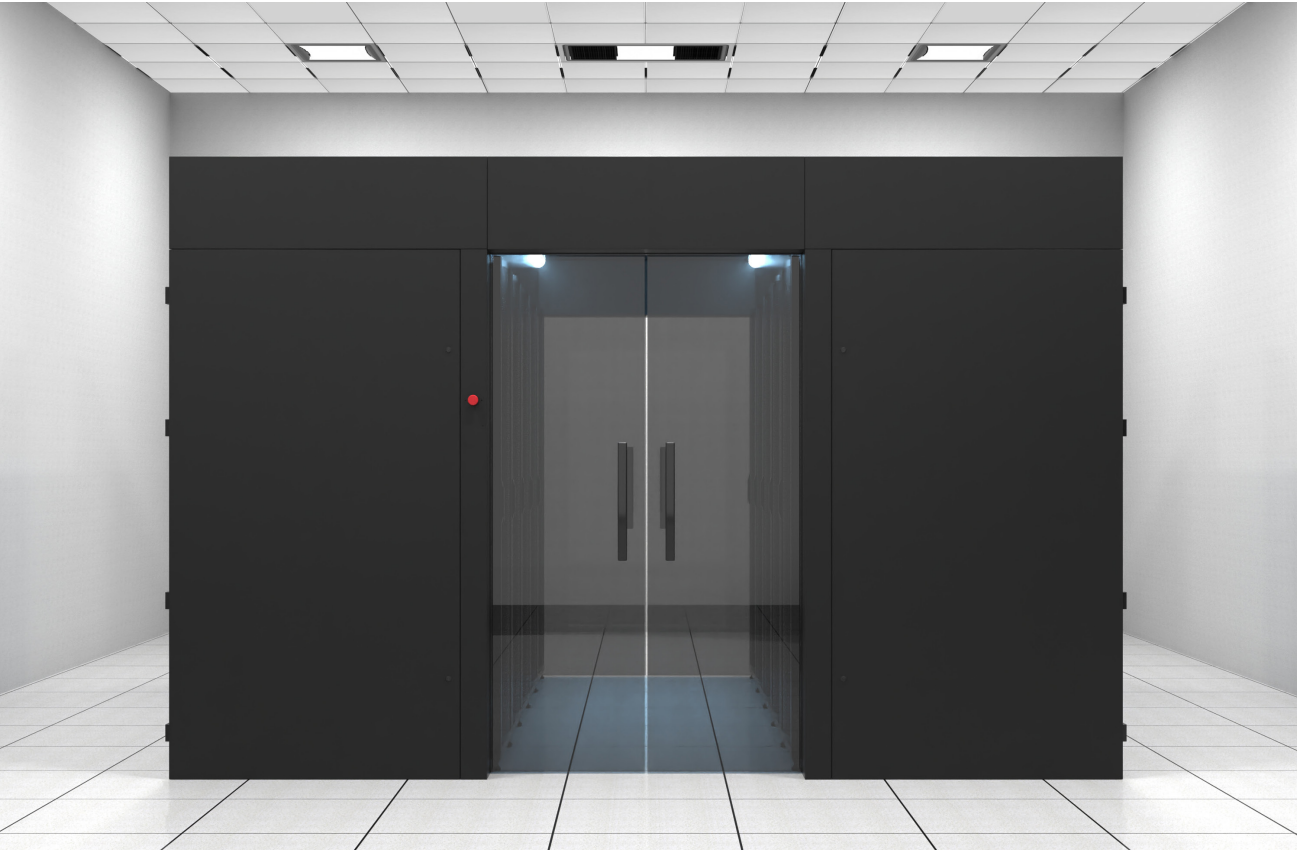
NO	ITEM NO	NAME	SIZE	DESCRIPTION
1	KTD 03 2 001	Aluminum alloy frame sliding door 2000mm	1200(W)*2000(H)	Sliding left and right, made of aluminum alloy frame and tempered glass, fixed by hanging free of ground rail.
2	KTD 03 2 002	Aluminum alloy frame sliding door 2200mm	1200(W)*2200(H)	Sliding left and right, made of aluminum alloy frame and tempered glass, fixed by hanging free of ground rail.



METAL FRAME SLIDING DOOR

With a sliding hanging rail at the top, no rail at the bottom, knob on both sides.
with 5mm thickness transperant monitoring window.

NO	ITEM NO	NAME	SIZE	DESCRIPTION
1	KTD 03 2 003	Metal frame sliding door 2000mm	1200(W)*2000(H)	Sliding left and right, made of metal frame and tempered glass, fixed by hanging free of ground rail.
2	KTD 03 2 004	Metal frame sliding door 2200mm	1200(W)*2200(H)	Sliding left and right, made of metal frame and tempered glass, fixed by hanging free of ground rail.



FRAMELESS SLIDING DOOR WITH CABINETS ON BOTH SIDES

With a sliding hanging rail at the top, no rail at the bottom, knob on both sides.
with 5mm thickness transperant monitoring window.

NO	ITEM NO	NAME	SIZE	DESCRIPTION
1	KTD 03 2 005	Frameless sliding door with cabinets on both sides 2000	1200(W)*2000(H)	Sliding left and right, frameless glass sliding door, with decorative cabinets on both sides, fixed by hanging free of ground rail.
2	KTD 03 2 006	Frameless sliding door with cabinets on both sides 2200	1200(W)*2200(H)	Sliding left and right, frameless glass sliding door, with decorative cabinets on both sides, fixed by hanging free of ground rail.



AUTOMATIC SLIDING DOOR

Frameless automatic sliding door With high-strength sliding hanging rail at the top. With 5mm thickness transperant monitoring window. Access by card or password

NO	ITEM NO	NAME	SIZE	DESCRIPTION
1	KTD 03 3 001	Automatic sliding door 2000mm	1200(W)*2000(H)	Sliding automatically, made of aluminum alloy frame and tempered glass, access control by sensor, fixed by hanging free of ground rail
2	KTD 03 3 002	Automatic sliding door 2200mm	1200(W)*2200(H)	Sliding automatically, made of aluminum alloy frame and tempered glass, access control by sensor, fixed by hanging free of ground rail



AUTOMATIC SLIDING DOOR WITH FALSE CABINET ON BOTH SIDES

Automatic sliding door with false cabinet on both sides With high-strength sliding hanging rail at the top. With 12mm thickness transperant monitoring window. Access by card or password.

NO	ITEM NO	NAME	SIZE	DESCRIPTION
1	KTD 03 3 003	Automatic sliding door with false cabinet on both sides 2000mm	1200(W)*2000(H)	Sliding automatically, made of tempered glass with decorative cabinet on both sides, access control, fixed by handing free of ground rail
2	KTD 03 3 004	Automatic sliding door with false cabinet on both sides 2200mm	1200(W)*2200(H)	Sliding automatically, made of tempered glass with decorative cabinet on both sides, access control, fixed by handing free of ground rail

CONTROL UNIT



FIRE FIGHTING CONTROL UNIT

1. One set for each cold aisle, preset terminal linked with fire fighting signal, open the roof panel automatically to eliminate the potential danger in the aisle.
2. The fire control linkage unit has a small circuit breaker to protect the equipment from overcurrent and short circuit, with indicator shows blue light as normal for maintenance.
3. 2U size for standard 19" cabinet, installation can be inside the cabinet or at the top.

AMBIENT LIGHT CONTROL UNIT

1. Each aisle with a set, connecting with the atmosphere light of the aisle to manage the color change.
2. With switch for blue and green color change function.
3. When the roof panel openned, smoke alarm, temperature and humidity alarm etc. occurs, the atmosphere light turns red.
4. Ambient light control unit with a small circuit breaker to protect the device from overcurrent and short circuit.
5. Input voltage AC 220V/110V, output voltage DC 24V/12V.

NO	ITEM NO	NAME	SIZE	DESCRIPTION
1	KTD 04 1 001	Fire fighting control unit	2U, 19 inch installation	Voltage input 220V, one for each containment, 24V power switch, simultaneously operation is optional, 2m long power cord with plug
2	KTD 04 2 001	Roof panel reset control unit	2U, 19 inch installation	Receiving control information, provide reset drive power, simultaneously operation is optional.
3	KTD 04 3 001	Cold asile dynamic environment intelligent acquisition unit	1U, 19 inch installation	Dynamic environment monitoring, collecting and controlling cold aisle temperature, humidity, roof panel system etc. Operated by touch screen
4	KTD 04 4 001	LED display control unit	2U, 19 inch installation	Receive control information from display screen, with four detective status exchange, accept modification content by internet, flash disk. Red and blue signal lights exchange simultaneously with the detection status of display screen
5	KTD 04 5 001	Ambient light control unit	2U, 19 inch installation	One set for each aisle, 12V power supply switch, control ambient light, simultaneously with roof panel open state, 2m long power cord with plug
6	KTD 04 6 001	Lighting control unit		With dual control switch for openning and closing, two sets for one aisle.



LIGHTING SYSTEM

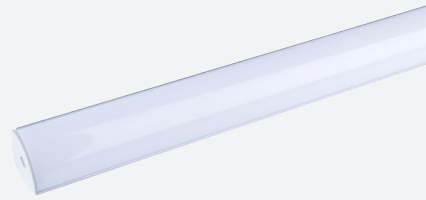
LED LIGHTING

T5 white light adopts LED cold light source, exposed installation, illumination is more than 600 lumens.

	NO	ITEM NO	NAME	DESCRIPTION
	1	KTD 6 1 0300	T5 white light 300mm	T5 white light; voltage 220V; length: 321mm; power 4W, up to 30pcs in series
	2	KTD 6 1 0600	T5 white light 600mm	T5 white light; voltage 220V; length: 583mm; power 8W, up to 15pcs in series
	3	KTD 6 1 0900	T5 white light 900mm	T5 white light; voltage 220V; length: 883mm; power 10W, up to 10pcs in series
	4	KTD 6 1 1000	T5 White light 1000mm	T5 white light; voltage 220V; length: 1050mm; power 12W, up to 9pcs in series
	5	KTD 6 1 1200	T5 white light 1200mm	T5 white light; voltage 220V; length: 1180mm; power 16W, up to 8pcs in series

LED THREE PRIMARY ATMOSPHERE LAMP

The LED three primary color atmosphere lights provides blue, green and red colors, reflects the internal temperature environment status through different color of lights.

	NO	ITEM NO	NAME	DESCRIPTION
	1	KTD 6 2 0600	LED three primary color atmosphere light 600mm	Voltage DC12V; length: 600mm,
	2	KTD 6 2 1200	LED three primary color atmosphere light 1200mm	Voltage DC12V; length: 1200mm
	3	KTD 6 2 1800	LED three primary color atmosphere light 1800mm	Voltage DC12V; length: 1800mm
	4	KTD 6 2 2400	LED three primary color atmosphere light 2400mm	Voltage DC12V; length: 2400mm
	5	KTD 6 2 3000	LED three primary color atmosphere light 3000mm	Voltage DC12V; length: 3000mm;



DECORATIVE WALL

NO	ITEM NO	TYPE	NAME	SIZE	DESCRIPTION
1	KTD 05 1 001	Decorative wall (fake frame)	All metal decorative wall 600x2000	600(W)*2000(H)	All-metal folding structure, to fill the empty space while baying the cabinets.
2	KTD 05 1 002		All metal decorative wall 600x2200	600(W)*2200(H)	All-metal folding structure, to fill the empty space while baying the cabinets.
3	KTD 05 2 001		Built-in acrylic decorative wall 600x2000	600(W)*2000(H)	Metal frame with acrylic board, to fill the empty space while baying the cabinets.
4	KTD 05 2 002		Built-in acrylic decorative wall 600x2200	600(W)*2200(H)	Metal frame with acrylic board, to fill the empty space while baying the cabinets.
5	KTD 05 3 001	Sealing decorative board	Sealing decorative board	custom made	Customized parts, all-metal folding structure, used for sealing the pillars in the channel.

FUNCTION

When the pillar among the cabinets, sealing decorative board should be installed aligning the cabinet door.

When the pillar in the aisle, install a decorative wall between the pillar and the cabinet.

Airflow isolation is for better hot and cold wind management, make the whole system beautiful and integrative.



Sealing decorative board



Sealing decorative board with pillar cover

ENVIRONMENT MONITORING



7 INCH TOUCHING SCREEN KTD071001

Display the temperature, humidity and air pressure status, display the status of the roof panel, control reset of the roof panel automatically, with the application of cold asile dynamic environment intelligent acquisition unit.

Resistive screen , need to be used with 19-inch dynamic ring monitoring host

And with Sealed decorative hoarding with wrapped column



10 INCH TOUCHING SCREEN KTD071002

Applying 10 inch touch screen, Cortex A7 CPU, Android operating system

1x RS232, 5x RS485 serial ports, has 5x DI(digit input) and 2x DO(digit output), Applying Cortex A7 CPU, Android operating system

Able to connect sensors such as water leakage, lightning protection, infrared ray, smoking, etc.



SMOKE SENSOR KTD071011

DC12V network connected, dry contact switch output

Input voltage: DC12V;

Detection range: 20m²;

Size: φ100*55mm

Sound volume: 85 dB;

Working temperature: -10℃ ~50℃

Switch output: open/ close

TEMPERATURE SENSOR KTD071021

12-24V network connected, alarm temperature 50-70 degrees, dry contact switch output

Input voltage: DC12V/24V;

Size: φ107*50mm;

Working temperature: 50℃ ~70℃ ;

Switch output: open / close;

Installation height: less than 4 meters

DISPLAY MODULE FOR COLLECTED TEMPERATURE AND HUMIDITY KTD071031

Built-in probe, set the upper and lower limits according to different temperature and humidity, control the backlash, and set the control mode separately.

Input voltage: DC12V/24V;

Size: 86*86*26mm

Temperature range: -40℃ ~+60℃ ;

Temperature accuracy: ±0.5℃ (25℃ environment);

Temperature resolution: 0.1℃ ;

Humidity range: 0%RH~80%RH;

Humidity accuracy: ±3%RH (25℃ environment);

Communication port: RS485 port;