

.....

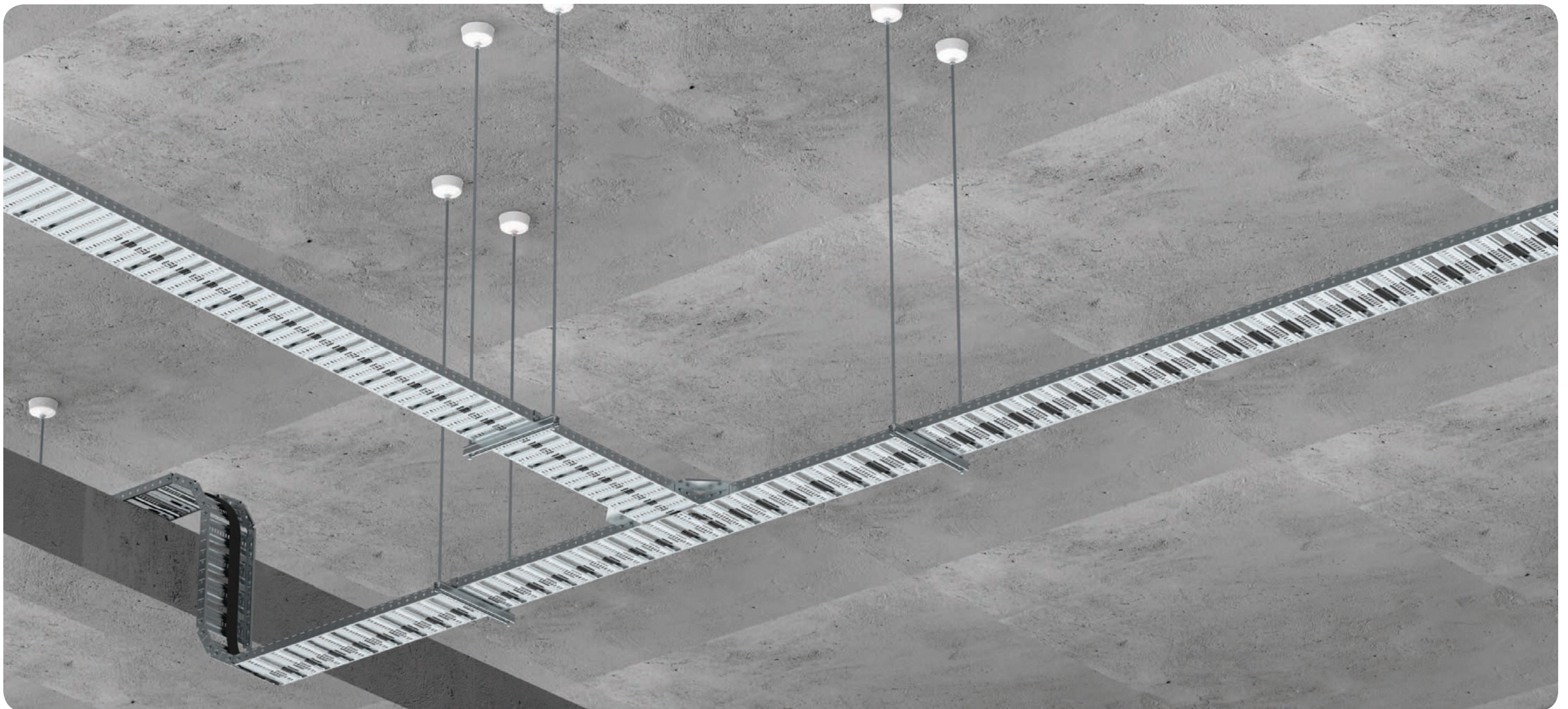
ENERGY SAVING CABLE TRAY

+

.....

A COMPLETELY NEW BASE STRUCTURE PROVIDES CABLES
WITH EXCELLENT VENTILATION.

ENERGY SAVING CABLE TRAY

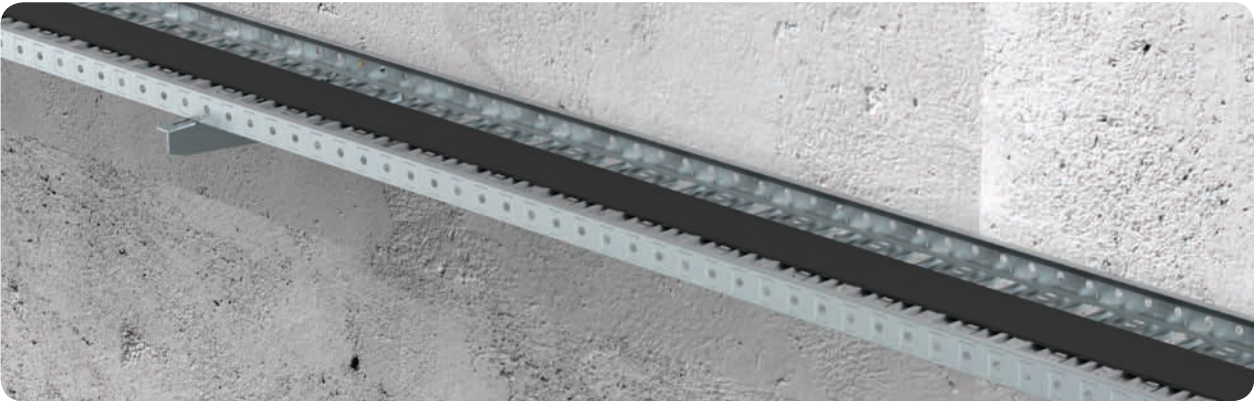


ENERGY SAVING CABLE TRAY
STRAIGHT SECTION

TECHNICAL SPECIFICATION

Part name	Width(mm)	Height (mm)	Length(mm)
Straight section	150	50	3000
	300		
	450		
	600		

- Material and surface treatment:PG HDP PC
- Material thickness: 0.8 (mm)

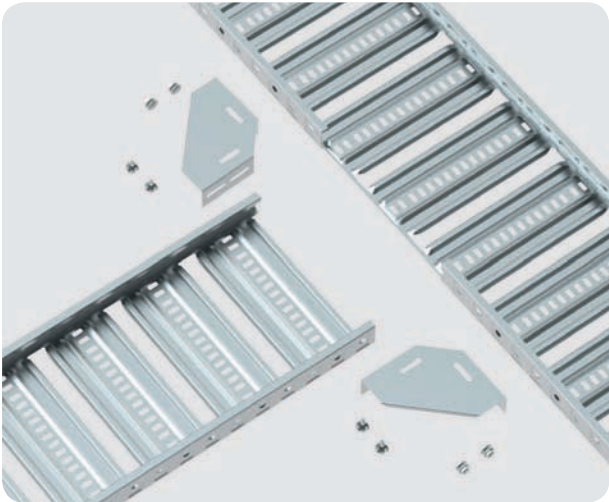
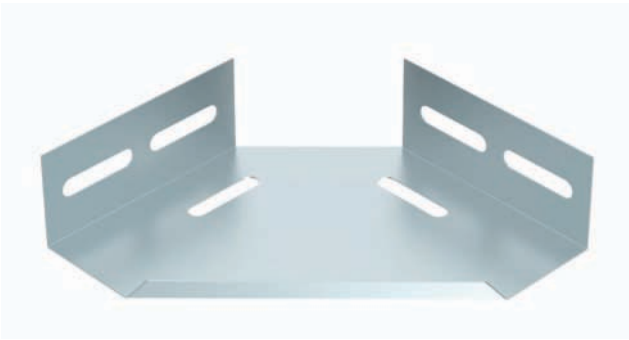


ENERGY SAVING CABLE TRAY
T CONNECTOR

TECHNICAL SPECIFICATION

Part name	Product size(mm)	Surface treatment
T connector	93 × 32 × 2	PG HDP PC

- Suit for assembling vertical elbow, Tee and Cross
- Use M8 carriage bolt and nut for installation

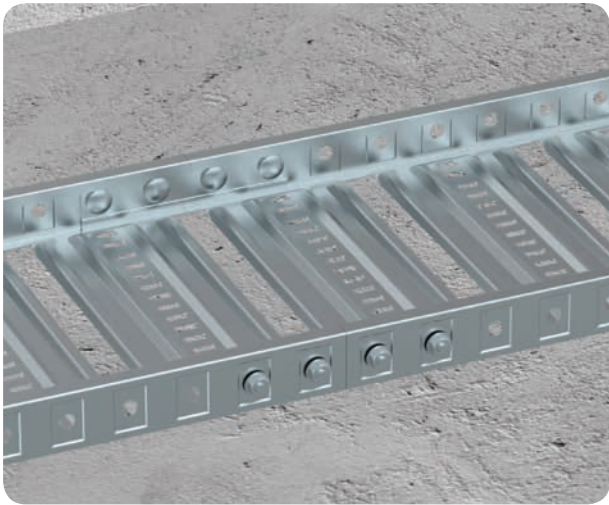
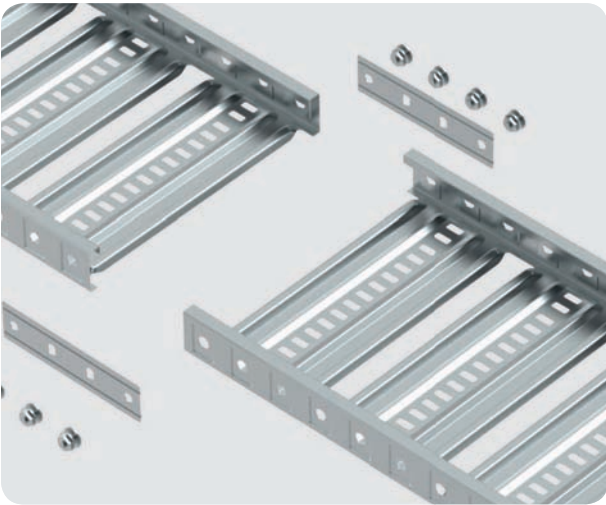
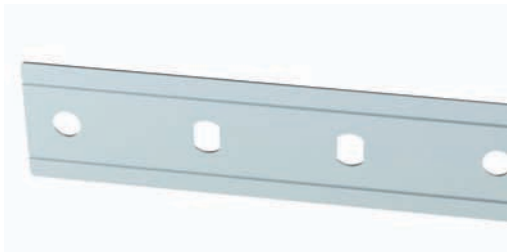


ENERGY SAVING CABLE TRAY
DOCKING BLOCK

TECHNICAL SPECIFICATION

Part name	Product size(mm)	Surface treatment
Docking block	180 × 46 × 1	PG HDP PC

- Use M8 carriage bolt and nut for installation

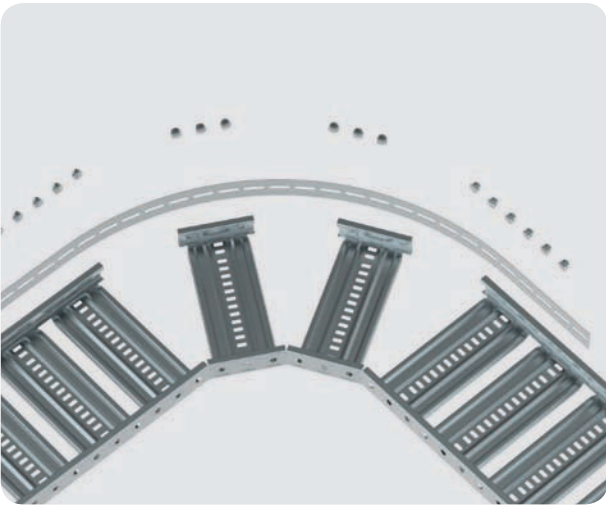
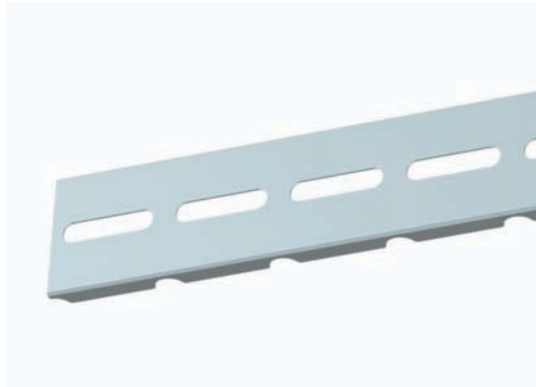


ENERGY SAVING CABLE TRAY
ARC CONNECTING STRIP

TECHNICAL SPECIFICATION

Part name	Product size(mm)	Surface treatment
Arc connecting strip	54 × 9.5	PG HDP PC

- Use M8 carriage bolt and nut for installation

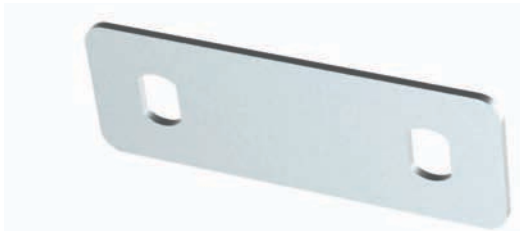


ENERGY SAVING CABLE TRAY
UP AND DOWN BENDING CONNECTOR

TECHNICAL SPECIFICATION

Part name	Product size(mm)	Surface treatment
Up and down bending connector	93 × 32 × 2	PG HDP PC

- Use M8 carriage bolt and nut for installation



ENERGY SAVING CABLE TRAY
ARC CONNECTING STRIP

TECHNICAL SPECIFICATION

Part name	Product size(mm)	Surface treatment
Arc connecting strip	47 × 40 × 49	PG HDP PC

- Suit for 41x21mm, 41x41mm strut channel hanging bar
- Suit for M10 or M12 threaded rod

