

FIBRE MANAGEMENT

➔ UL QUALITY CERTIFICATION ➔ HIGH FLAME RETARDANT MATERIAL ➔ TOOL FREE INSTALLATION





Our customers come first

Listening first, flexibility and transparency are just a few of the ways we put our customers first.



Extensive engineering knowledge

We lead with engineering meaning no surprises in lead time or cost when entering production.



A Chinese supplier globally

China is called "world factory" we make it our priority to be what you need us.



Unmatched industry expertise

For our customer's first program their 50th, we participate in specific industries because we understand the mission critical specs, best practices and customers' expectations.

FIBER MANAGEMENT SYSTEM

Topwell Tech is designed to provide a safe, easy-to-use and cost-effective management system for fragile optical cables. Topwell Tech allows you to route fiber-optic cables between equipment, providing both the physical protection and bend radius management crucial to optical cable performance.

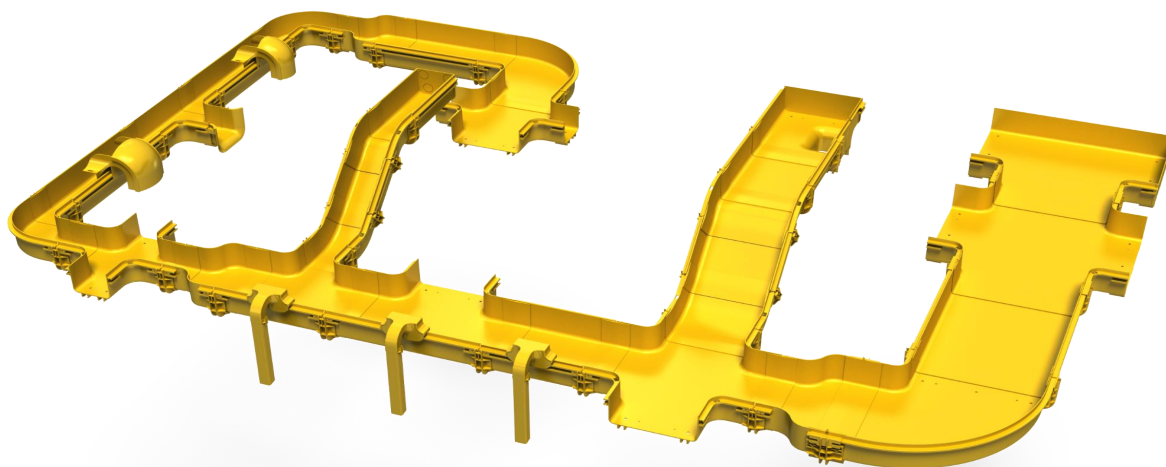
60x60

120x100

240x100

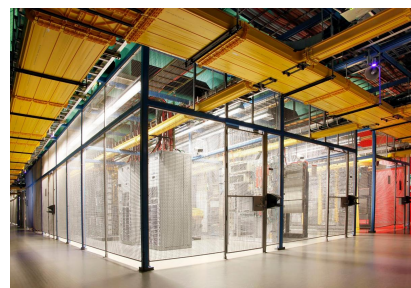
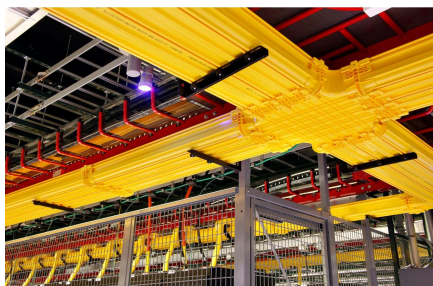
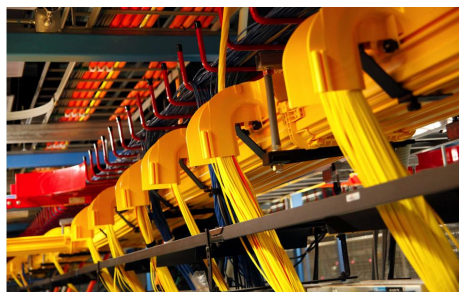
360x100

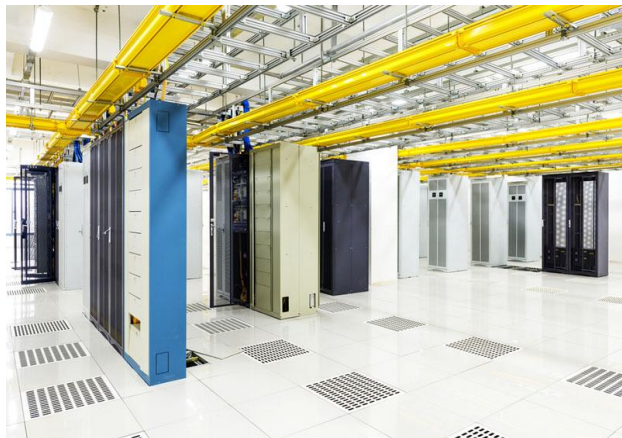
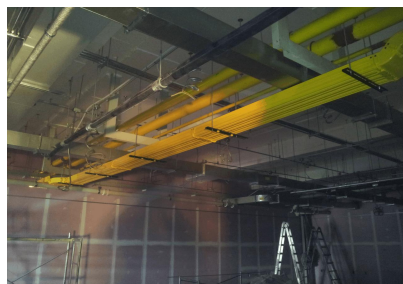
600x100



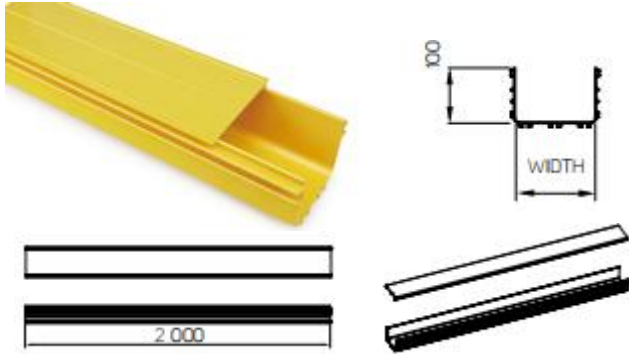
MAIN ADVANTAGES

- Designed to make optical cable management systems safe and easy-to-use
- Fully modular, scalable system
- Bend radius protection
- Halogen-free PC-ABS material, compliant with UL 94 V-0
- Designed for three installation variables: hung from ceiling, top of rack support or a combination of these
- Multilevel installation





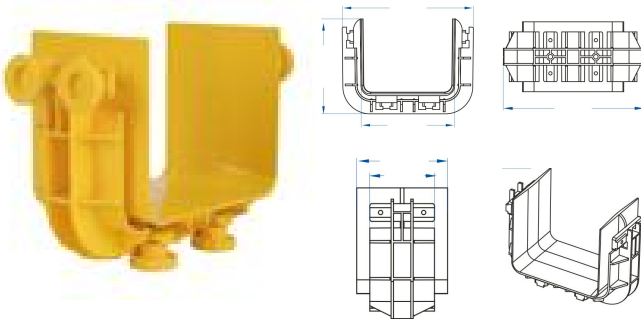
STRAIGHT DUCT



Item No.:	Spec(mm)		
	W	H	L
SD100	60	60	2000
SD120	120	100	2000
SD240	240	100	2000
SD360	360	100	2000
SD600	600	100	2000

- An extruded 2-meter-long conduit; can be connected with other Topwell Tech products using joiners
- Delivered in even numbers (packaged by 2 pcs = 4 m)
- Can be easily cut to length on-site
- Color: Yellow
- Cover: Option

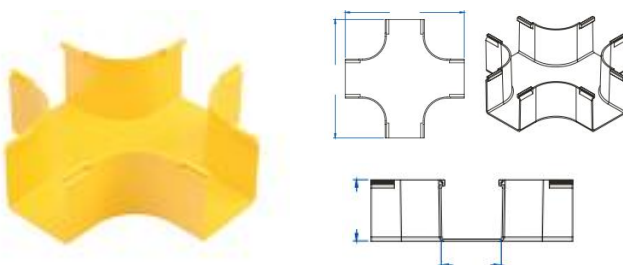
JOINERS



- Used to connect two Topwell Tech component
- Does not require drilling of duct or components
- Color: Yellow
- Package includes: 1 × joiner, 8 × screws

Item No.:	Spec(mm)	
	W	H
JS060	60	60
JS120	120	100
JS240	240	100
JS360	360	100
JS600	600	100

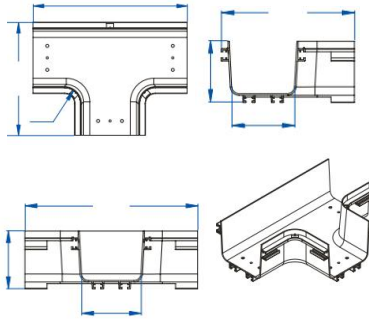
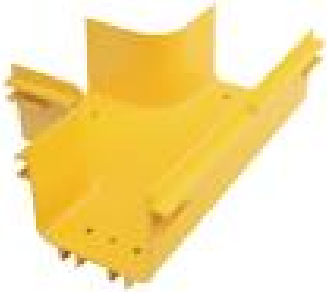
CROSS



- Used to establish a 4-way, right-angled intersection
- Four joiners required per cross
- Color: Yellow
- Cover: Option

Item No.:	Spec(mm)	
	W	H
CS060	60	60
CS120	120	100
CS240	240	100
CS360	360	100

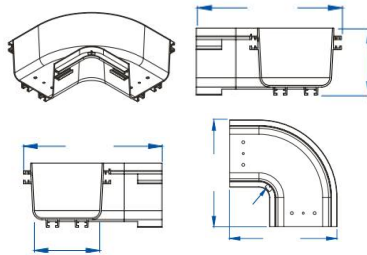
TEE



- Used to establish a 3-way, right-angled intersection
- Three joiners required per tee
- Color: Yellow
- Cover: Option

Item No.:	Spec(mm)	
	W	H
TE060	60	60
TE120	120	100
TE240	240	100
TE360	360	100
TE600	600	100

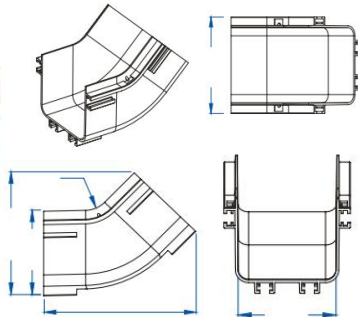
ELBOW



- Allows ducts to be diverted through 45° or 90°
- Two joiners required per elbow
- Color: Yellow
- Cover: Option

Item No.:	Spec(mm)	
	W	H
EW060	60	60
EW120	120	100
EW240	240	100
EW360	360	100

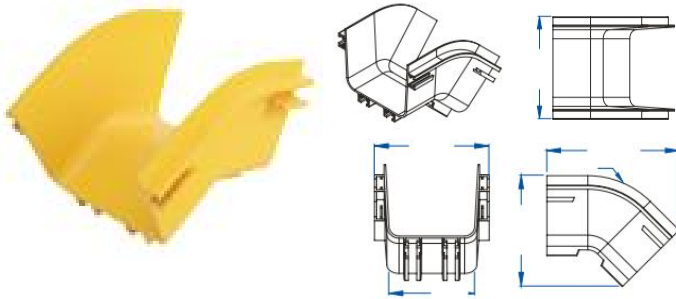
UP ELBOW



- Allows ducts to be diverted through 45° or 90° with an inside angle (usually in an upward direction)
- Two joiners required per elbow
- Color: Yellow
- Cover: Option

Item No.:	Spec(mm)	
	W	H
UE060	60	60
UE120	120	100
UE240	240	100
UE360	360	100

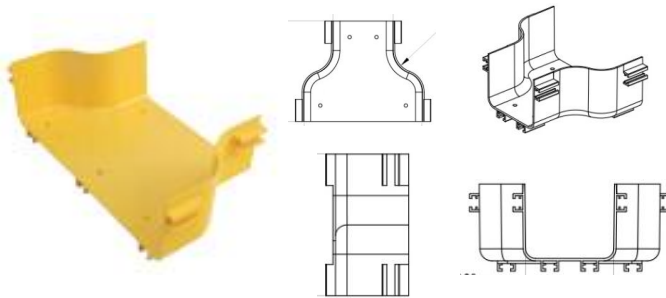
DOWN ELBOW



- Allows ducts to be diverted through 45° or 90° with an inside angle (usually in a downward direction)
- Two joiners required per elbow
- Color: Yellow
- Cover: Option

Item No.:	Spec(mm)	
	W	H
DE060	60	60
DE120	120	100
DE240	240	100
DE360	360	100

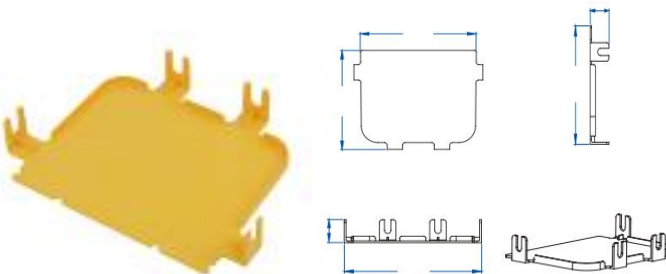
ADAPTER



- Allows Topwell Tech sections to be joined together
- Two joiners required per reducer
- Color: Yellow
- Cover: Option

Item No.:	Spec(mm)		
	W1	W2	H
AR240	240	120	100
AR360	360	240	100
AR600	600	360	100

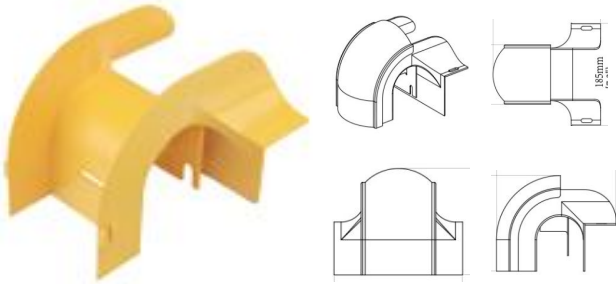
END CAP



- Provides a clean finish to end of Topwell Tech run
- Color: Yellow

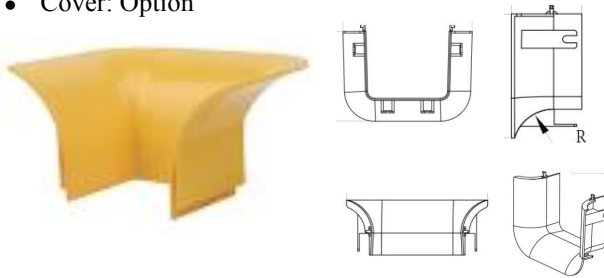
Item No.:	Spec(mm)	
	W	H
EC060	60	60
EC120	120	100
EC240	240	100
EC360	360	100
EC600	600	100

CABLE EXIT



- Used to provide a protected exit for cables leaving the Topwell Tech ducting system
- Color: Yellow
- Cover: Option

Item No.:	Spec(mm)	
	W	H
CE060	60	60
CE090	90	170
CE120	120	170
CE130	130	170



- Used to provide bend-radius control for cables entering or exiting the Topwell Tech ducting system
- One joiner required per trumpet
- Color: Yellow

Item No.:	Spec(mm)	
	W	H
TT060	60	60
TT120	120	100
TT240	60	60



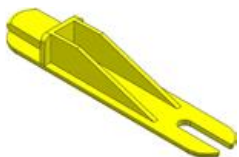
Pipe Fixer

Corrugated Pipe

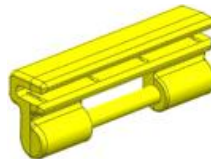
CABLE EXIT BRACKET

Item No.:	Spec(mm)	Overall(mm)
PF050	50	56×52×23
CP050	Φ50mm	Φ50
CP090	Φ90mm	Φ90

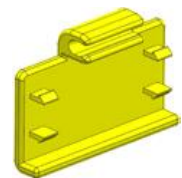
ACCESSORIES



CUTTING IN TEE BRACKET



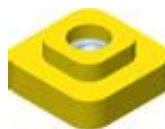
HINGED COVER UPPER PART



HINGED COVER LOWER PART



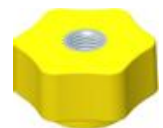
PLASTIC ROUND HEAD BOLT
M5X15



PLASTIC SQUARE NUT
M5

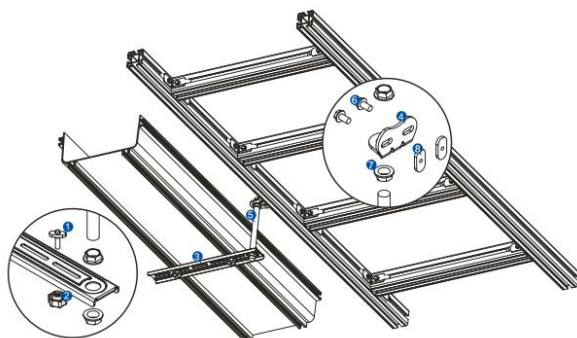


PLASTIC T SHAPE BOLT
M6X15



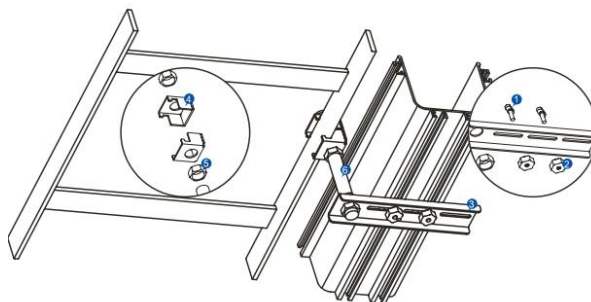
PLASTIC TWIST NUT
M6

INSTALLATION



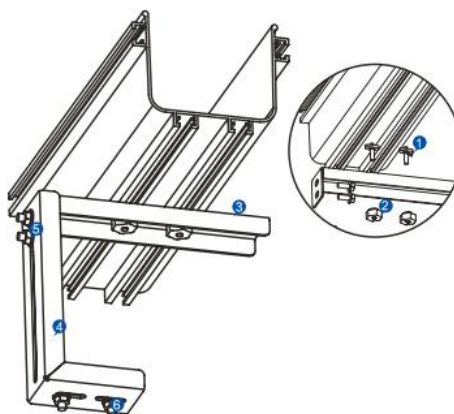
ALUMINUM LADDER RACK SIDE SUPPORT
(SUIT FOR 120MM AND 240MM ONLY)

- | | |
|----------------------------|--------------------|
| 1 Plastic T shape bolt × 2 | 5 Threaded rod × 1 |
| 2 Plastic twist nut × 2 | 6 M6 Bolt × 2 |
| 3 Single hole bar × 1 | 7 Flange nut × 4 |
| 4 Ladder rack bracket × 1 | 8 Flexible nut × 2 |



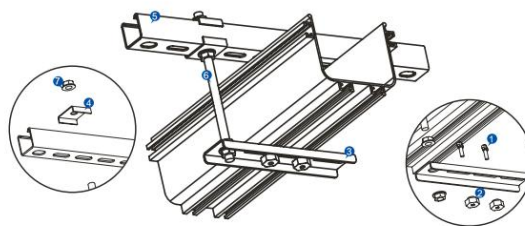
FLAT STEEL LADDER RACK SIDE SUPPORT
(SUIT FOR 120MM AND 240MM ONLY)

- | | |
|----------------------------|--------------------------|
| 1 Plastic T shape bolt × 2 | 4 Flat steel fixture × 2 |
| 2 Plastic twist nut × 2 | 5 Flange nut × 4 |
| 3 Single hole bar × 1 | 6 Threaded rod × 1 |



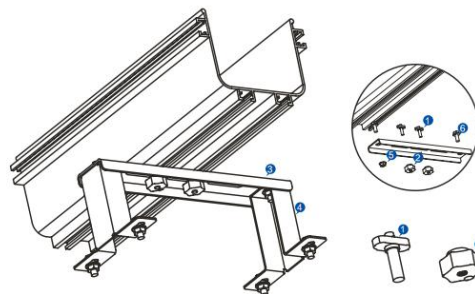
ADJUSTABLE CABINET TOP SUPPORT KIT
(SUIT FOR ALL THE SIZES)

- | | |
|--|--|
| 1 Plastic T shape bolt × 2 | 4 Adjustable cabinet top support stand × 1 |
| 2 Plastic twist nut × 2 | 5 M8 Flange nut × 6 |
| 3 Adjustable cabinet top support bar × 1 | 6 M8 bolt × 6 |



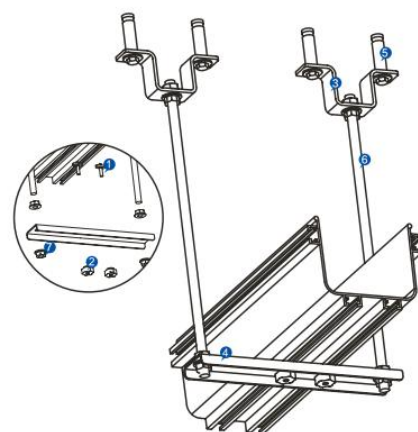
STRUT CHANNEL MOUNTING SUPPORT
(SUIT FOR 120MM AND 240MM ONLY)

- | | |
|-------------------------------|--------------------|
| 1 Plastic T shape bolt × 2 | 5 Threaded rod × 1 |
| 2 Plastic twist nut × 2 | 6 Flange nut × 4 |
| 3 Single hole bar × 1 | |
| 4 Strut channel clamp kit × 1 | |



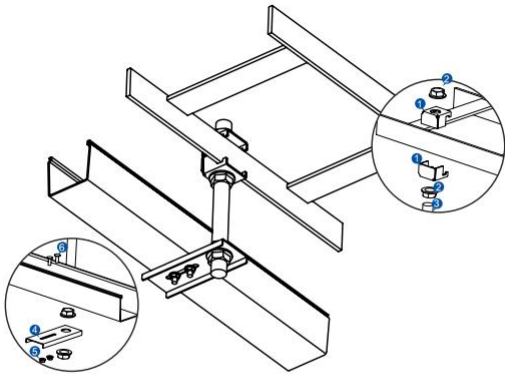
CABINET TOP SUPPORT KIT
(SUIT FOR ALL THE SIZES)

- | | |
|----------------------------|-------------------------|
| 1 Plastic T shape bolt × 2 | 4 Cabinet top stand × 2 |
| 2 Plastic twist nut × 2 | 5 M8 Flange nut × 6 |
| 3 Dual-hole bar × 1 | 6 M8 bolt × 6 |



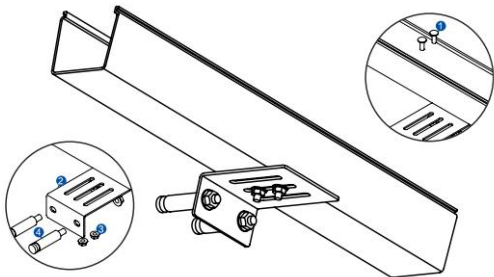
CEILING MOUNTING SUPPORT KIT
(SUIT FOR ALL THE SIZES)

- | | |
|----------------------------|----------------------|
| 1 Plastic T shape bolt × 2 | 5 Expansion bolt × 2 |
| 2 Plastic twist nut × 2 | 6 Threaded rod × 2 |
| 3 Q Bracket × 2 | 7 Flange nut × 8 |
| 4 Dual hole bar × 1 | |



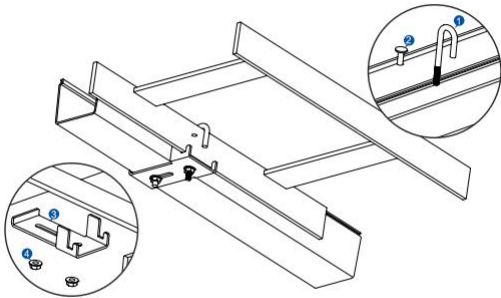
60X60 LADDER RACK MOUNTING

- 1 Flat steel fixture × 2
- 2 M16 Flange nut × 4
- 3 M16 Threaded rod × 1
- 4 Single hole bar × 1
- 5 M6 Flange nut × 2
- 6 M6 bolt × 2



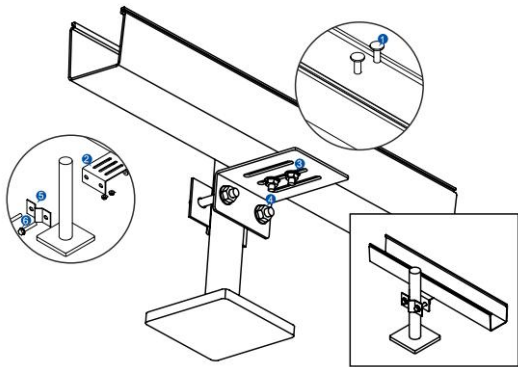
60X60 WALL MOUNTING

- 1 M6 × 14 bolt × 2
- 2 holder × 1
- 3 Flange nut × 4
- 4 Expansion bolt × 2



60X60 LADDER RACK MOUNTING

- 1 Hook screw × 1
- 2 M6 × 14 bolt × 1
- 3 Ladder rack fixture × 1
- 4 M6 Flange nut × 2



60X60 UNDER ACCESS FLOOR MOUNTING

- 1 M6 × 14 bolt × 2
- 2 holder × 1
- 3 M6 Flange nut × 2
- 4 M8 Flange nut × 2
- 5 Pedestal clamp × 1
- 6 M8 bolt × 2

CROSS ARM



SINGLE HOLE BAR



DUAL HOLE BAR



WALL BRACKET



ADJUSTABLE CABINET TOP SUPPORT STAND



ADJUSTABLE CABINET TOP SUPPORT BAR