

Hot aisle containment is made from light duty aluminum profile and thermal insulation PC board, has better heat dissipation performance than cold aisle containment in high density data centers, to strength the heat dissipation and save more energy. Thanks to it's modular structure makes it widely accepted in high density data centers.



HOT AISLE
CONTAINMENT

NORMAL HOT AISLE CONTAINMENT

The cabinets will be lined up back to back, make a sealed space from the top of cabinet rear door to ceiling as a hot aisle containment, enable the hot wind back to the CRAC via ceiling.



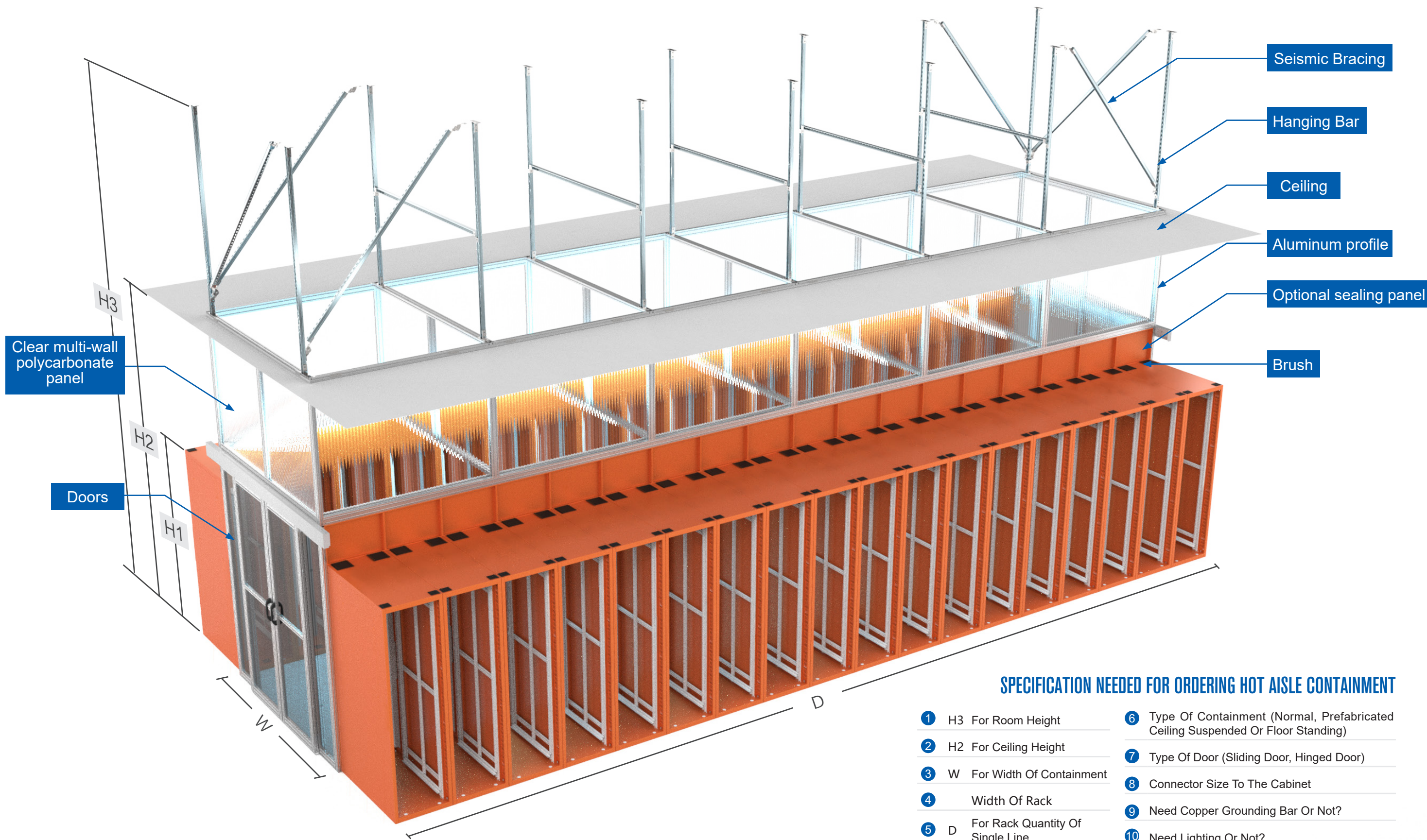


PREFABRICATED HOT AISLE CONTAINMENT

The support structure is used of several pieces of pre-combined modular aluminum profiles, which enables no welding is needed on site.

In overhead applications the solution is completely supported by the ceiling so it is rack independent and server cabinets can be moved in and out without effecting the containment.

The preserved space on the top of containment frame is available for camera, lighting, smoke sensor, pressure sensor and temperature sensor etc.



SPECIFICATION NEEDED FOR ORDERING HOT AISLE CONTAINMENT

- | | |
|--------------------------------------|---|
| ① H3 For Room Height | ⑥ Type Of Containment (Normal, Prefabricated Ceiling Suspended Or Floor Standing) |
| ② H2 For Ceiling Height | ⑦ Type Of Door (Sliding Door, Hinged Door) |
| ③ W For Width Of Containment | ⑧ Connector Size To The Cabinet |
| ④ Width Of Rack | ⑨ Need Copper Grounding Bar Or Not? |
| ⑤ D For Rack Quantity Of Single Line | ⑩ Need Lighting Or Not? |

PREFABRICATED CEILING SUSPENSION HOT AISLE CONTAINMENT

Includes hanging bar, seismic bracing, aluminum profile, doors, optional sealing panel, brush and sealing accessories.

Hanging bar is spliced by C or U channel, connecting to room top with adjustable connector plate.

With 3 sets of seismic bracing at both end of the containment, ensure the solution's entire strength in horizontal and vertical direction.

Material of aluminum profile : 6063-T5, anodizing in silver color

The clear multi-wall polycarbonate panel is hollow and fire proof, heat transfer coefficient $<4.5W/(M^2 \times K)$, partition designed double sliding door to reinforce the strength and stability, built-in magnet for better sealing performance after closing.



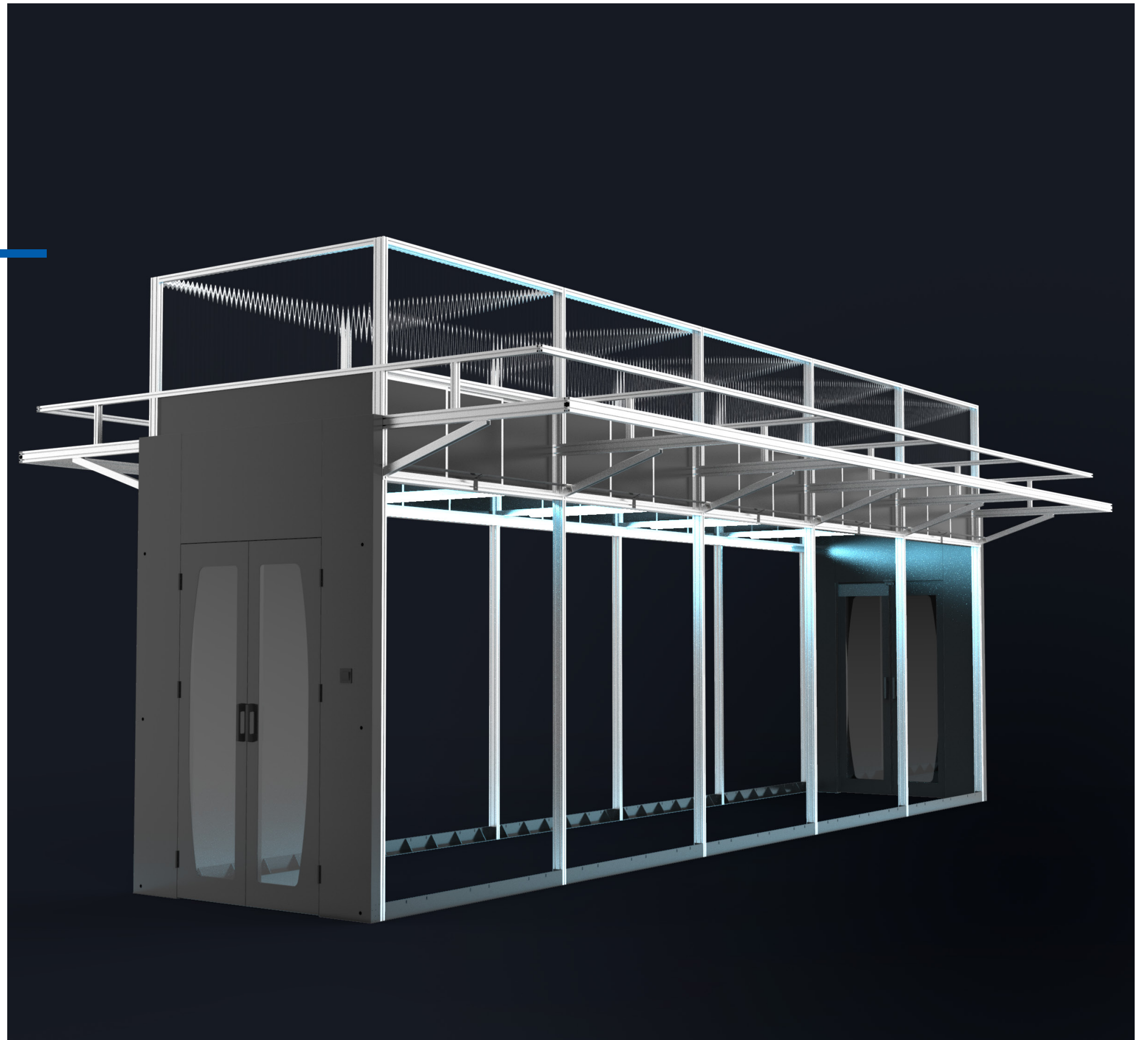
PREFABRICATED FLOOR STANDING HOT AISLE CONTAINMENT

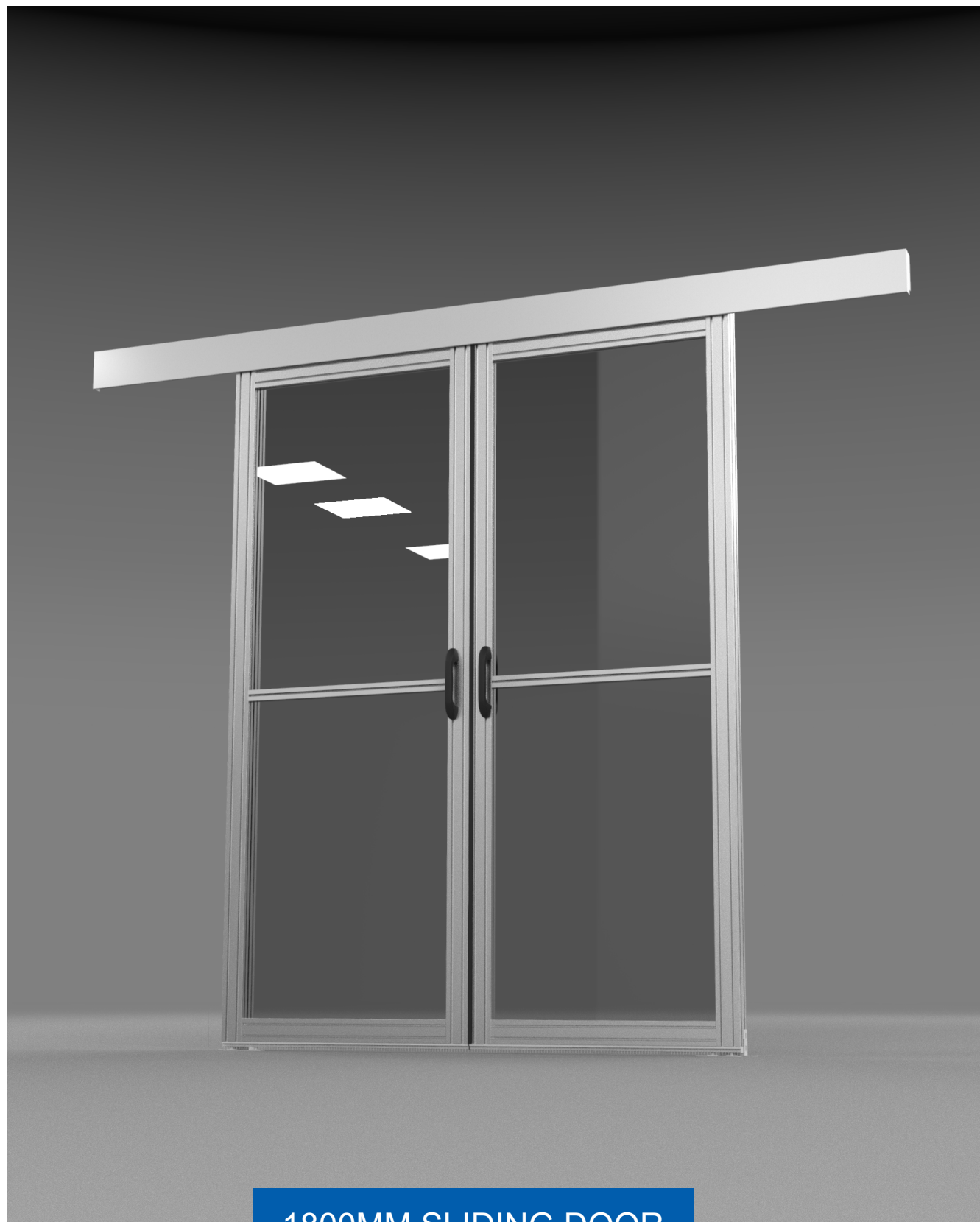
Pre-spliced aluminum profiles as modular unit, quick and fast installation on site without welding.

Material of aluminum profile : 6063-T5, anodizing in silver color

The clear multi-wall polycarbonate panel is hollow and fire proof, heat transfer coefficient $<4.5W/(M^2 \times K)$

Optional doors: double sliding doors, double hinged doors, available of door closer, door access control





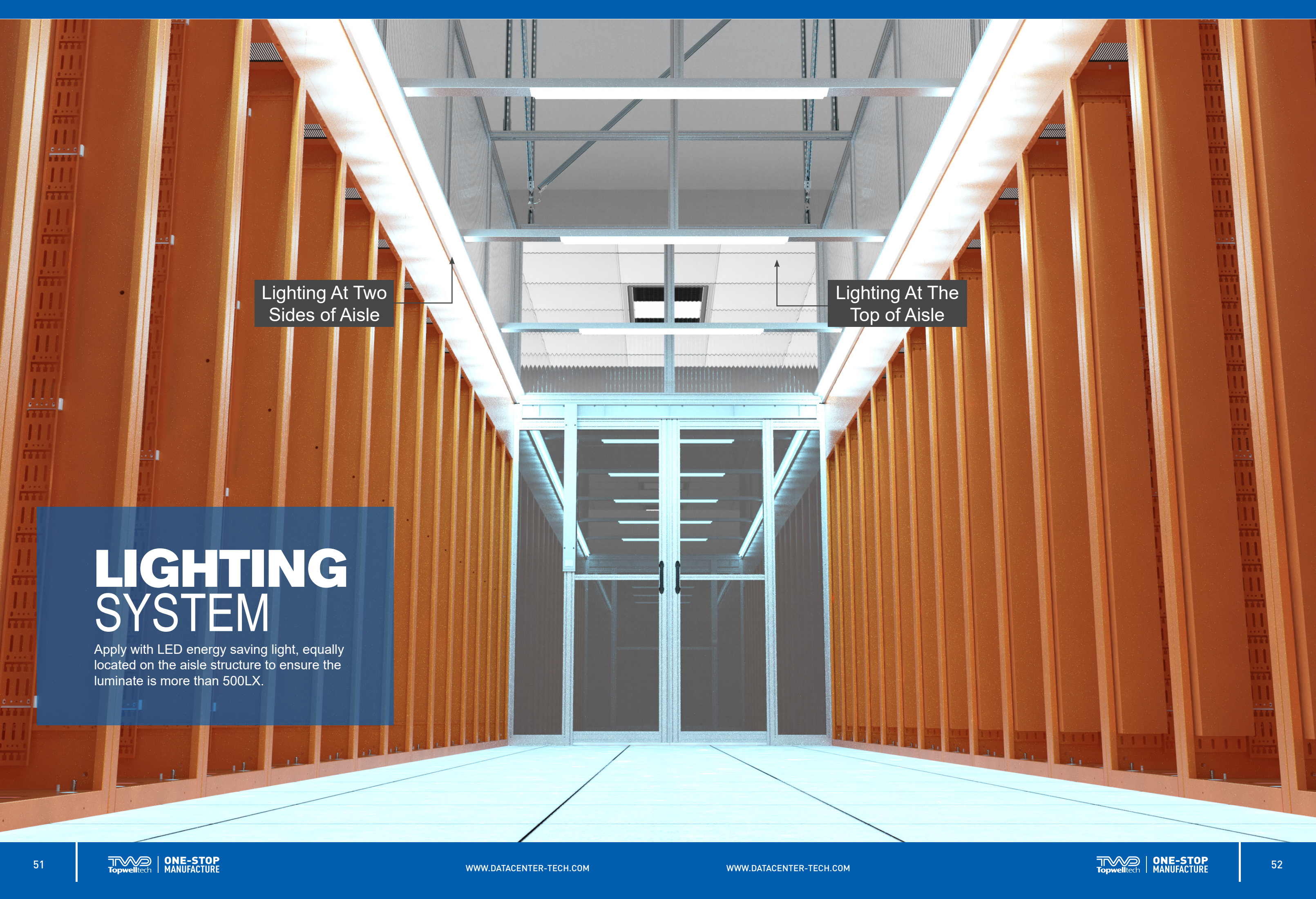
1800MM SLIDING DOOR

Installed when the containment width is less than 1800mm,
with two active doors.



2400MM SLIDING DOOR

Installed when the containment width is 2400mm,
with two active doors



Lighting At Two
Sides of Aisle

Lighting At The
Top of Aisle

LIGHTING SYSTEM

Apply with LED energy saving light, equally
located on the aisle structure to ensure the
luminate is more than 500LX.